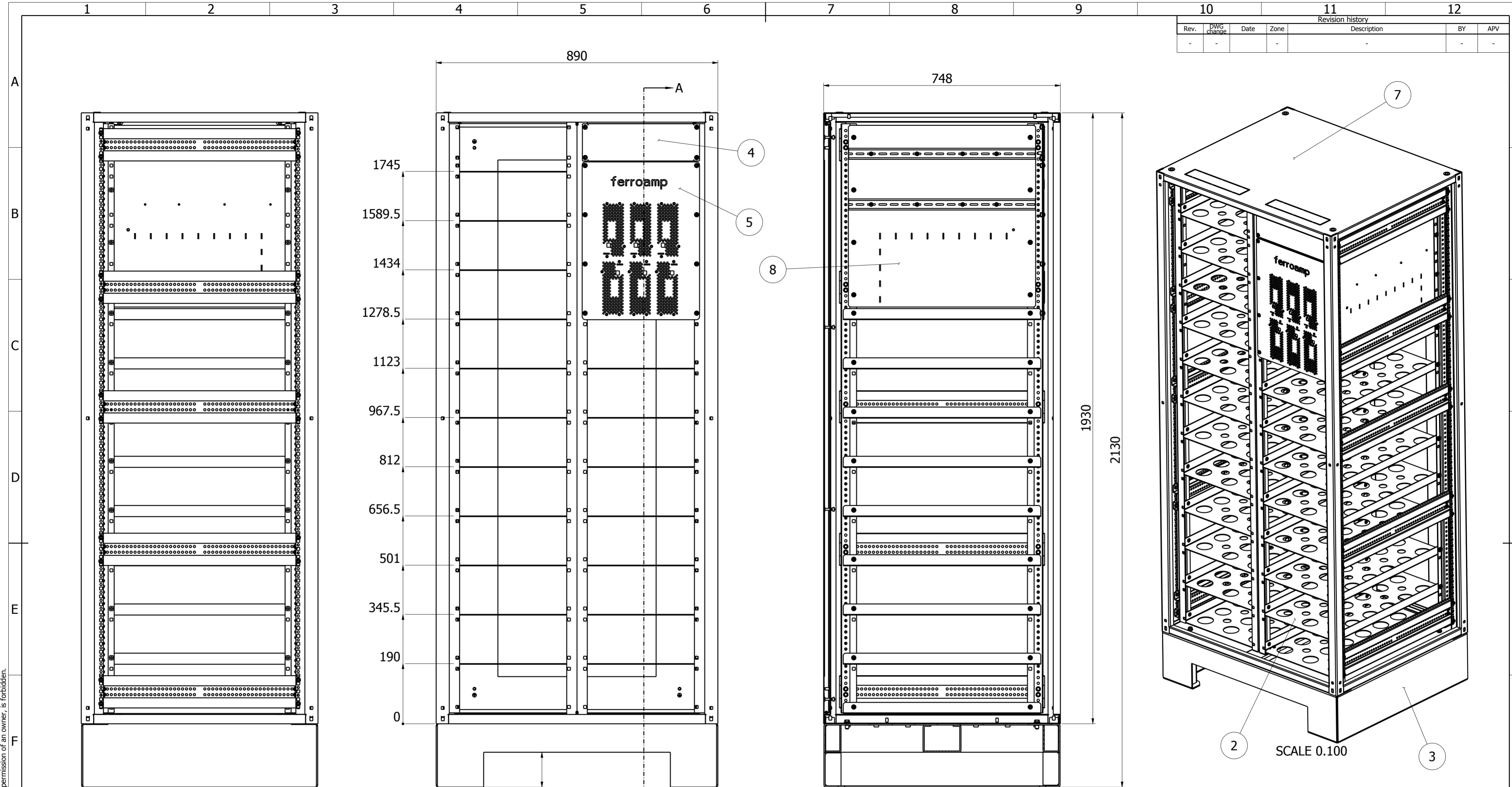


This document is a property of ZPAS S.A.. Duplication or sharing to a third party, without a permission of an owner, is forbidden.

Revision history							BY	APV
Rev.	DWG change	Date	Zone	Description				
-	-	-	-	-	-	-	-	-



Limits for nominal sizes in mm ISO 2768-mK								
Dimension	0,5-3	3-6	6-30	30-120	120-400	400-1000	1000-2000	>2000
Tolerance	±0,1	±0,1	±0,2	±0,3	±0,5	±0,8	±1,2	±2

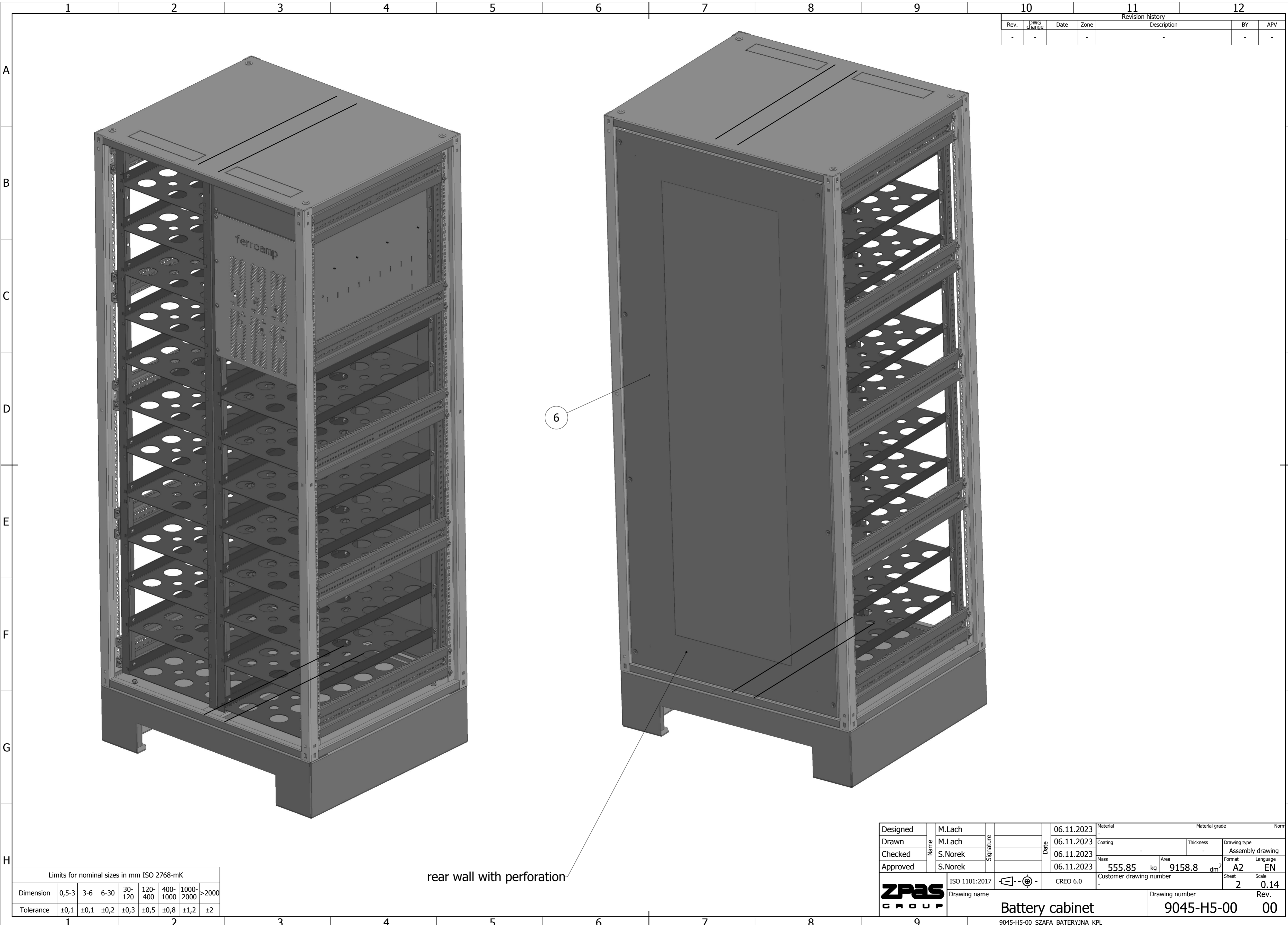
SECTION A-A

Baseline documentation:  
9045-A1-00

Pos.	Part name	Dwg No/Norm	Rev	Qty.	Material	Coating	Mass	Remarks/index
9	Special packaging	9045-J7-00	00	1	-	-	127.4	-
8	Mounting plate asm	9045-H7-00	00	1	-	-	6.0	-
7	Frame asm.	9045-H2-00	00	1	-	-	86.0	-
6	Rear wall asm.	9045-F7-00	00	1	-	-	20.3	-
5	Ferroamp blanking plate asm.	9045-F5-00	00	1	-	-	3.9	-
4	Blanking plate asm	9045-F3-00	00	1	-	-	0.795	-
3	Plinth asm.	9045-E1-00	00	1	-	-	62.9	-
2	Shelf asm.	9045-C5-00	00	21	-	-	71.6	-
1				20			176.8	

Designed	M.Lach	Date	06.11.2023	Material	Material grade			Norm
Drawn	M.Lach	Date	06.11.2023	Coating	Thickness	Drawing type		
Checked	S.Norek	Date	06.11.2023	Mass	Area	9158.8	dm <sup>2</sup>	Format
Approved	S.Norek	Date	06.11.2023	555.85	kg	9158.8	dm <sup>2</sup>	A2
ISO 1101:2017		CREO 6.0	Customer drawing number	Sheet	1	Scale	0.12	Rev.
ZPAS GROUP		Drawing name	Battery cabinet	Sheet	1	Scale	0.12	Rev.
		Drawing number	9045-H5-00	00				

Revision history				11	12	
Rev.	DWG change	Date	Zone	Description	BY	APV
-	-	-	-	-	-	-



This document is a property of ZPAS S.A.. Duplication or sharing to a third party, without a permission of an owner, is forbidden.

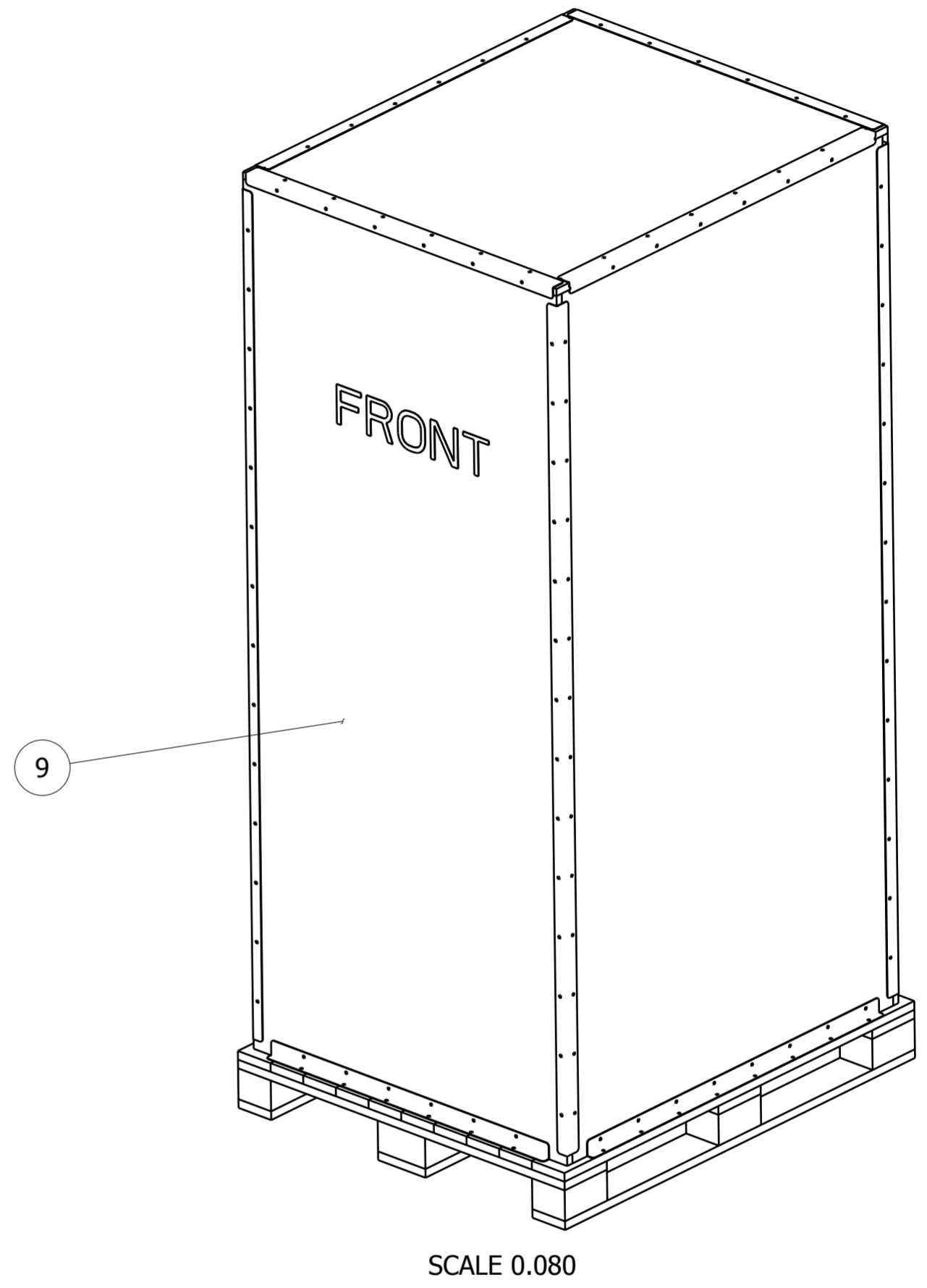
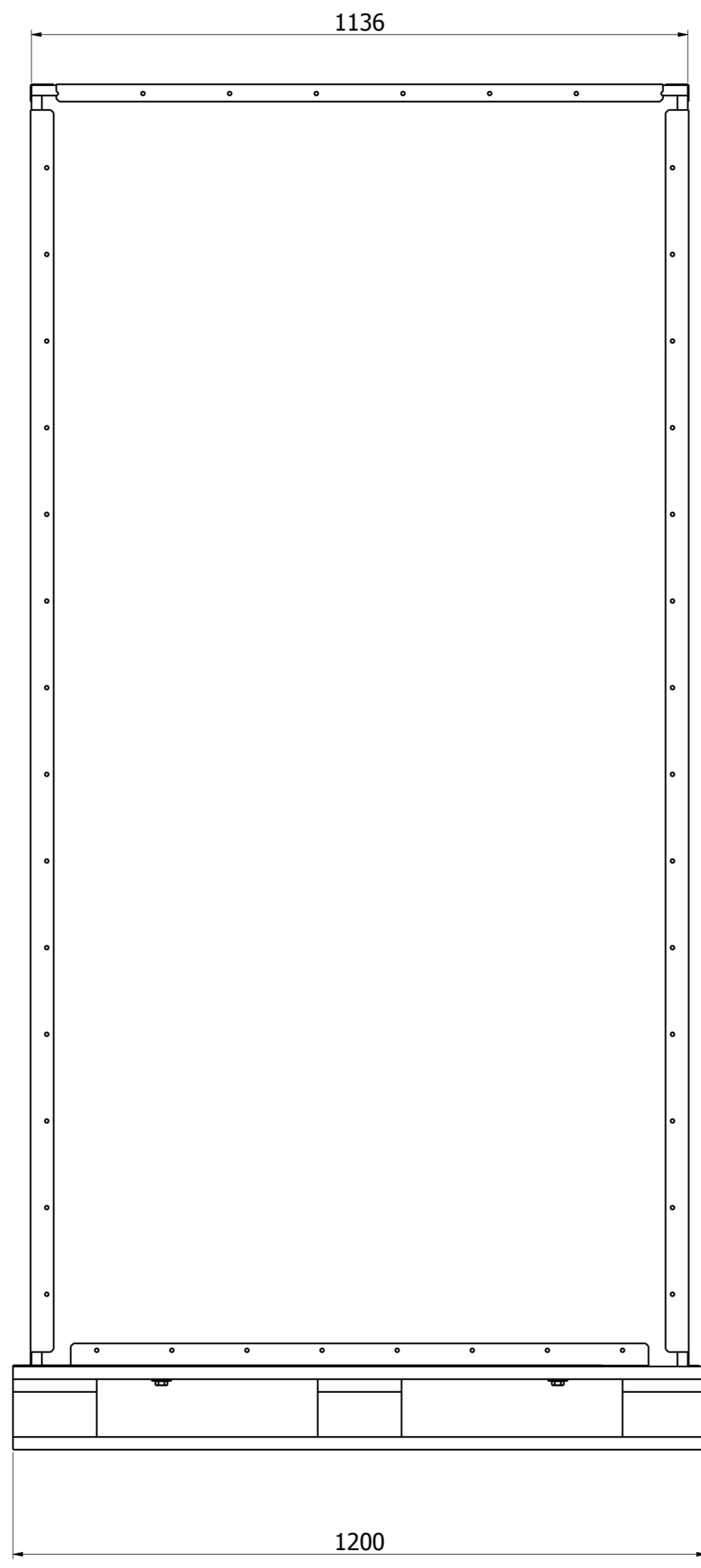
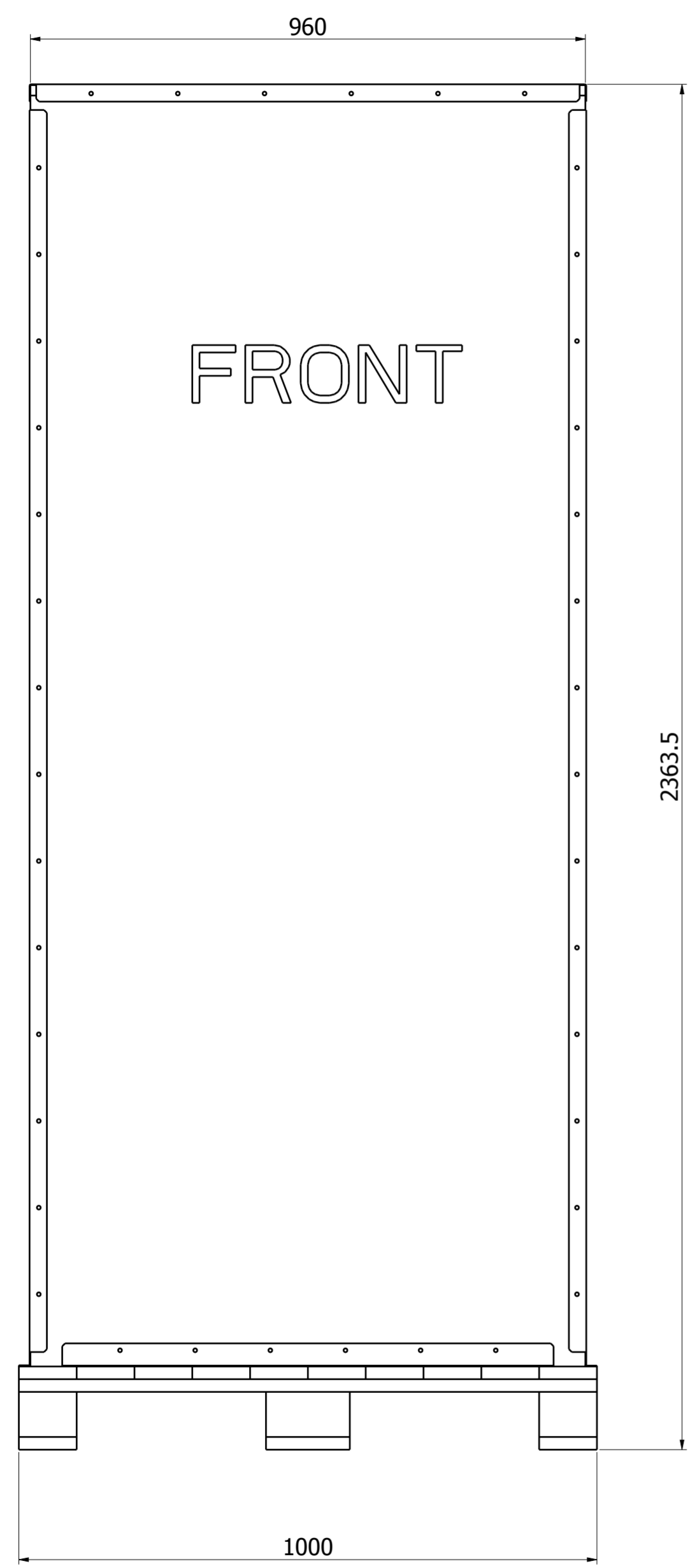
Limits for nominal sizes in mm ISO 2768-mK								
Dimension	0,5-3	3-6	6-30	30-120	120-400	400-1000	1000-2000	>2000
Tolerance	±0,1	±0,1	±0,2	±0,3	±0,5	±0,8	±1,2	±2

rear wall with perforation

Designed	M.Lach	Date	06.11.2023	Material	-	Material grade	Norm
Drawn	M.Lach	Date	06.11.2023	Coating	-	Thickness	-
Checked	S.Norek	Date	06.11.2023	Mass	555.85 kg	Area	9158.8 dm <sup>2</sup>
Approved	S.Norek	Date	06.11.2023	Customer drawing number	-	Format	A2
		ISO 1101:2017	CREO 6.0	Sheet	2	Language	EN
Drawing name				Drawing number		Scale	
Battery cabinet				9045-H5-00		00	
9045-H5-00_SZAFA_BATERYJNA_KPL							

Revision history				11	12	
Rev.	DWG change	Date	Zone	Description	BY	APV
-	-	-	-	-	-	-

This document is a property of ZPAS S.A.. Duplication or sharing to a third party, without a permission of an owner, is forbidden.



Limits for nominal sizes in mm ISO 2768-mK								
Dimension	0,5-3	3-6	6-30	30-120	120-400	400-1000	1000-2000	>2000
Tolerance	±0,1	±0,1	±0,2	±0,3	±0,5	±0,8	±1,2	±2

Designed	M.Lach	Date	06.11.2023	Material	Material grade			Norm
Drawn	M.Lach	Date	06.11.2023	Coating	-	Thickness	-	Drawing type
Checked	S.Norek	Date	06.11.2023	Mass	555.85	Area	9158.8	Format
Approved	S.Norek	Date	06.11.2023	Customer drawing number	-	dm <sup>2</sup>	A2	Language
ISO 1101:2017		CREO 6.0		Sheet	3	Scale	0.12	Rev.
				Drawing name		Drawing number		
				Battery cabinet		9045-H5-00		00
9045-H5-00_SZAFA_BATERYJNA_KPL								