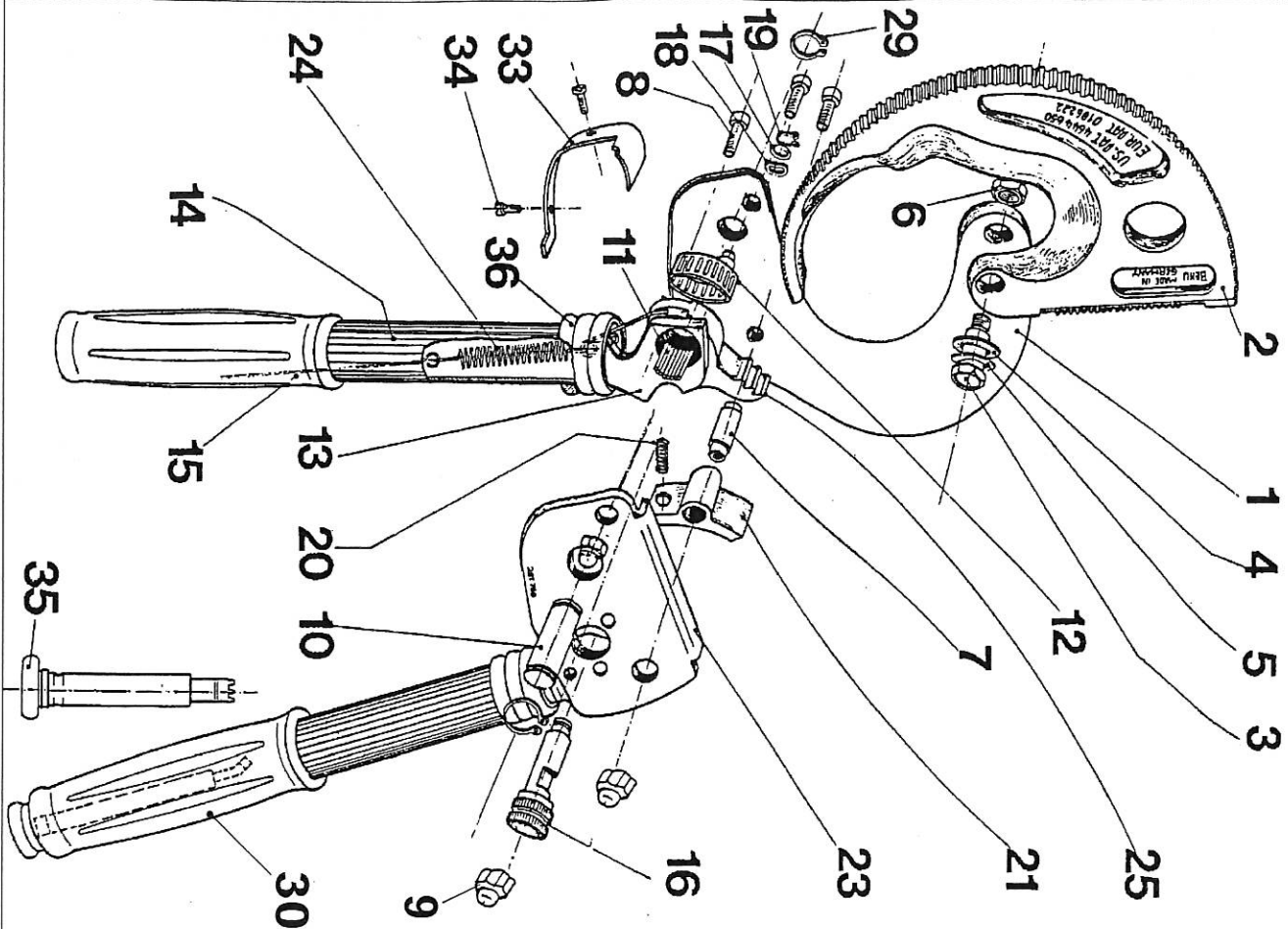


Spareparts Price List

This list is valid until:

Cable Cutter 'KS-62'



Part No.	Eaches per cutter	Description	Order No.	Price/each €
1	1	Fixed blade	62.101	50,14
2	1	Moveable blade	62.102	51,35
3	1	Pinscrew	62.103	2,36
4	1	Plate washer	62.104	0,19
5	1	Adjustment washer	62.105	0,19
6	1	headed nut	62.106	0,32
7	2	Distance case	62.107	1,74
8	3	Assembling screw	62.108	0,24
9	3	Headed nut for part (8)	62.109	0,32
10	1	Axle	62.110	1,53
11	21	Bearing needles	62.111	0,19
12	1	Cage bearing	62.112	3,11
13	1	Eccentric lever	62.113	43,16
14	1	Plastic coating, different colours, per meter	62.114	1,61
15	1	Grip	62.115	1,29
16	1	Locking axle	62.116	10,82
17	1	Washer	62.117	0,21
18	1	Plate washer	62.118	0,21
19	1	Circlip	62.119	0,21
20	1	Spring	62.120	0,35
21	1	Holding ratchet	62.121	16,05
22	1	Cover plate, with handle tube	62.122	23,57
23	1	Tension spring, c/w wire bows	62.123	62,124
24	1	Advance ratchet, boring diameter 29 mm	62.124	2,76
25	1	Circlip for part 10	62.125	19,22
29	1	Grip with holding device for cleaning comb	62.129	0,21
30	2	Cover plate	62.130	1,29
33	1	Screw for cover plate	62.133	3,19
34	2	Cleaning comb	62.134	0,21
35	1	Rubber ring	62.135	2,01
36	2	Rubber ring	62.136	0,40

ASSEMBLING SETS

31	1	Excentric lever (13), assembled c/w advance ratchet, tension spring, bearing needles and axle	62.131	65,09
32	1	Moveable blade, c/w pin screw, plate spring, adjustment washer and headed nut	62.132	49,15

** For deliveries before November 1995 please use following order numbers:

Part 11	28 Needles	1,5 mmØ x 15,8 mm lg.	Best.-Nr.: 62.111.1
Part 12	1 Needle cage	24 x 28 x 13 mm	Best.-Nr.: 62.112.1
Part 25	1 Advance ratchet	28 mm boring diam.	Best.-Nr.: 62.125.1

BEKU-APPARATEBAU Quitzowstr. 24/26 Tel.: +49-30 - 396 06 90
 Friedrich-Günther Laux 10559 BERLIN Fax: +49-30 - 396 50 97