












Air-termination and down conductor systems

	Conductor material	500
	Air-termination systems	503
	Air-termination rods	510
	Roof conductor holder	519
	Cable bracket	528
	Connectors and connection terminals	537
	Connection and separating terminals	564
	Earth entries	568
	Accessories	570

Air-termination rods



Type FangFix-Junior		
Length	Item no.	Page
1 m	5403308	503



Type 101 VL Tapered tubular air-termination rod		
Length	Item no.	Page
1.5 m	5401980	503
2.0 m	5401983	503
2.5 m	5401986	503
3.0 m	5401989	503
3.5 m	5401993	503
4.0 m	5401995	503



Type 101 ALU Threaded air-termination rod		
Length	Item no.	Page
1.0 m	5401771	507
1.5 m	5401801	507
2.0 m	5401836	507
3.0 m	5401879	507



Concrete blocks		
Type	Item no.	Page
FangFix	5403200	504
FangFix	5403205	504
Loose	5403227	504
FangFix	5403103	505
FangFix	5403110	505
Loose	5403117	505
Thread	5402891	507

Air-termination rod systems up to 8 m



Type 101 3B isFang air-termination rod, AL		
Length	Item no.	Page
4.0 m	5402864	510
4.5 m	5402866	510
5.0 m	5402868	510
5.5 m	5402870	510
6.0 m	5402872	510
6.5 m	5402874	510
7.0 m	5402876	510
7.5 m	5402878	510
8.0 m	5402880	510



isFang air-termination rod, insulated		
Length	Item no.	Page
4.0 m	5408943	511
6.0 m	5408947	511
4.0 m	5408942	511
6.0 m	5408946	511



isFang stand		
Spr.	Item no.	Page
1.0 m	5408966	511
1.5 m	5408967	511
1.0 m	5408968	511
1.5 m	5408969	511

Air-termination rod systems 10 m, 12 m, 14 m, 19 m Accessories, air-termination rod systems



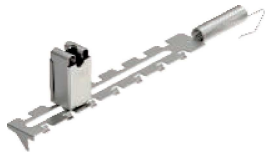
irod		
Length	Item no.	Page
10 m	5400810	517
12 m	5400812	517
14 m	5400814	517
19 m	5400817	517



Accessories		
Type	Item no.	Page
isFang 3B-100 AL	5408966	511
isFang 3B-150 AL	5408967	511
isFang 3B-100	5408968	511
isFang 3B-150	5408968	513
F-FIX-S16	5403227	504
F-FIX-B16 3B	5403238	513



Roof conductor holder



Ridge

Surface	Item no.	Page
V2A	5203018	519
V2A	5202833	519
V2A	5203015	519
V2A	5202510	520
Copper-plated	5203023	519
Copper-plated	5202868	519
Copper-plated	5202590	520
FT	5202566	520



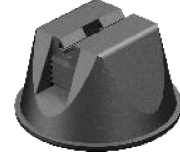
Tile

Surface	Item no.	Page
V2A	5215555	521
V2A	5215552	521
V2A	5215544	521
V2A	5215668	522
Copper	5216192	521
Copper	5216184	521
Copper	5216184	521
Copper	5215749	522



Slate

Surface	Item no.	Page
V2A	5215838	523
V2A	5215439	523
V2A	5215374	523
Copper-plated	5215854	523
Copper-plated	5215471	523
Copper-plated	5215382	523



Flat roof

Colour	Item no.	Page
Grey	5218999	526

Connector



Vario quick connector 8-10

Surface	Item no.	Page
FT	5311500	537
FT	5311705	537
Copper	5311527	538
V2A	5311551	451
ALU	5311519	537
V4A	5311404	537
Bimetal	5311535	538



Vario quick connector 6-8

Surface	Item no.	Page
FT	5311410	538
Copper-plated	5311417	538
Copper-plated	5311407	539



Fix contact clamping screw Rd 8-10

Surface	Item no.	Page
FT	5304105	539
FT	5304107	539
FT	5304202	540
FT	5304318	540
Copper-plated	5304113	540



Flat roof

Surface	Item no.	Page
FT	5304164	540
Copper-plated	5304172	541
V2A	5304270	541
V2A	5304176	447

Terminals and clips



Fold

Surface	Item no.	Page
FT	5317010	549
FT	5317401	550
FT	5317428	552
Copper-plated	5317053	549
Copper-plated	5317258	550
Copper-plated	5317452	551
V2A	5317208	550
V2A	5317481	551



Trays

Surface	Item no.	Page
FT	5316450	552
FT	5316308	553
FT	5316510	554
Copper-plated	5316468	553
Copper-plated	5316154	554
V2A	5316459	552
V2A	5316324	553
V2A	5316324	553



Downspout

Surface	Item no.	Page
Strip galvanised	5350867	558
Strip galvanised	5351057	559
Copper-plated	5350883	558
Copper-plated	5351456	559
Copper-plated	5351472	559
V2A	5350905	558
V2A	5351251	559
ALU	5351359	559

Galvanised steel flat conductor for earth



Type	Dimension W x H mm	Cross- section mm ²	Normal ring ca. m	Normal ring ca. kg	Pack. m	Weight kg/100 m	Item No.
5052 DIN 20X2.5	20 x 2,5	50	122	50	122	41.000	5019340
5052 DIN 25X3	25 x 3	75	84	50	84	59.700	5019342
5052 DIN 30X3	30 x 3	90	71	50	71	70.650	5019344
5052 DIN 30X3.5	30 x 3,5	105	30	25	30	84.000	5019345
5052 DIN 30X3.5	30 x 3,5	105	60	50	60	84.000	5019347
5052 DIN 30X4	30 x 4	120	52	50	52	97.000	5019350
5052 DIN 40X4	40 x 4	160	40	51	40	128.000	5019355
5052 DIN 40X5	40 x 5	200	30	50	30	162.000	5019360

St Steel

FT Hot-dip galvanised

- According to DIN EN 62561-2 (VDE 0185-561-2)
- Meets the requirements of VDE 0185-305 (IEC 62305)
- Zinc coating: 500 g/m² (approx. 70 µm)
- For lightning protection, earthing systems and ring equipotential bonding

Stainless steel flat conductor

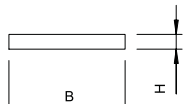


Type	Dimension W x H mm	Cross- section mm ²	Normal ring ca. m	Normal ring ca. kg	Pack. m	Weight kg/100 m	Item No.
5052 V2A 30X3.5	30 x 3,5	105	50	42	50	82.500	5018501
5052 V4A 30X3.5	30 x 3,5	105	50	42	50	82.425	5018706
5052 V4A 30X3.5	30 x 3,5	105	25	21	25	82.425	5018730

V2A Stainless steel, grade 304 V4A Stainless steel, 316Ti / 316L

- According to DIN EN 62561-2 (VDE 0185-561-2)
- Corresponds to the requirements of VDE 0185-305 (IEC 62305)
- According to the foundation earthen standard DIN 18014, V4A is required in the earth
- For use in areas at risk of corrosion
- For lightning protection, earthing systems and ring equipotential bonding

Flat conductor, copper

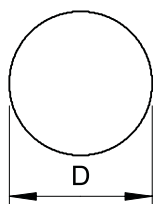


Type	Dimension W x H mm	Cross- section mm ²	Normal ring ca. m	Normal ring ca. kg	Pack. m	Weight kg/100 m	Item No.
FL 20-CU	20 x 2,5	50	45	20	45	44.500	5021804
FL 25-CU	25 x 3	75	50	33	50	67.000	5021830

Cu Copper

- According to DIN EN 62561-2 (VDE 0185-561-2)
- Meets the requirements of VDE 0185-305 (IEC 62305)
- For lightning protection, earthing systems and ring equipotential bonding

Round conductor, galvanised steel



Type	Nominal size Ø mm	Cross- section mm ²	Normal ring ca. m	Normal ring ca. kg	Pack. m	Weight kg/100 m	Item No.
RD 8-FT	8	50	125	50	125	40.000	5021081
RD 8-FT 50	8	50	50	20	50	40.000	5021050
RD 10	10	78	80	50	80	52.500	5021103

St Steel

FT Hot-dip galvanised

- According to DIN EN 62561-2 (VDE 0185-561-2)
- Corresponds to the requirements of VDE 0185-305 (IEC 62305)
- RD 10 can also be used in the earth
- Zinc coating: 350 g/m² (approx. 50 µm)

Round conductor, galvanised steel with PVC jacketing

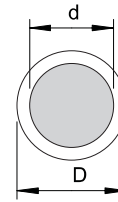


Type	Colour	Dimension d mm	Dimension D mm	Cross-section mm ²	Normal ring ca. m	Normal ring ca. kg	Pack. m	Weight kg/100 m	Item No.
RD 10-PVC	Black	10	13	78	75	50	75	67.000	5021162

St Steel

Ft Hot-dip galvanised

- Conforms to the requirements according to VDE V 0185-305, (IEC 62305)
- Zinc coating: 350 g/m² (approx. 50 µm)
- With PVC sheathing



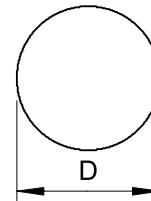
Round conductor, aluminium



Type	Nominal size Ø mm	Cross-section mm ²	Normal ring ca. m	Normal ring ca. kg	Pack. m	Weight kg/100 m	Item No.
RD 8-ALU	8	50	150	20	150	13.500	5021286
RD 8-ALU-T	8	50	150	20	150	13.500	5021294
RD 8-ALU-T 75	8	50	75	10	75	13.500	5021296
RD 10-ALU	10	78	95	20	95	21.000	5021308

Alu Aluminium

- According to DIN EN 62561-2 (VDE 0185-561-2)
- Corresponds to the requirements of VDE 0185-305 (IEC 62305)
- RD 8 ALU: Semi-hard (E-ALMgSi0.5 corresponds to DIN 48801)
- RD 8 ALU-T: Can be subjected to torsion (E-ALMgSi0.5 corresponds to DIN 48801)
- RD 10 ALU: Pure aluminium (E-Al corresponds to DIN 48801)
- AL and ALMgSi may not be routed directly on, in or under plaster, mortar or concrete, nor routed in the earth



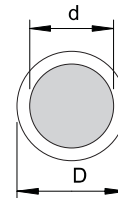
Round conductor, aluminium, with PVC sheathing



Type	Nominal size Ø mm	Cross-section mm ²	Normal ring ca. m	Normal ring ca. kg	Pack. m	Weight kg/100 m	Item No.
RD 8-PVC	8/11	50	100	20	100	20.000	5021332

Alu Aluminium

- Meets the requirements of VDE 0185-305 (IEC 62305)
- With PVC jacketing (halogen-free)
- Suitable for routing on, in or under plasterwork, mortar or concrete



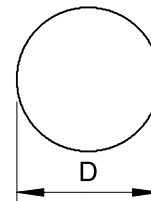
Round conductor, stainless steel A2



Type	Nominal size Ø mm	Cross-section mm ²	Normal ring ca. m	Normal ring ca. kg	Pack. m	Weight kg/100 m	Item No.
RD 8-V2A	8	50	125	50	125	40.000	5021235
RD 10-V2A	10	78	50	32	50	63.000	5021227
RD 10-V2A	10	78	80	50	80	63.000	5021239
RD 8-V4A	8	50	125	50	125	40.000	5021644
RD 10-V4A 20	10	78	20	12	20	63.000	5021640
RD 10-V4A	10	78	50	32	50	63.000	5021642
RD 10-V4A	10	78	80	50	80	63.000	5021647

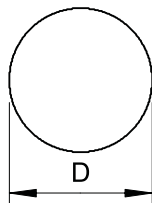
V2A Stainless steel, grade 304 V4A Stainless steel, 316Ti / 316L

- According to DIN EN 62561-2 (VDE 0185-561-2)
- Corresponds to the requirements of VDE 0185-305 (IEC 62305)
- RD 10-V4A for applications in the earth
- According to the foundation earthing standard DIN 18014, V4A is required in the earth



02_TBS_Produnkteilnehmerkatalog_EX_2018_en / 2018/11/23 15:05:20 (LLEExport_02235) / 2018/11/23 15:07:49 15:07:49

Round conductor, copper

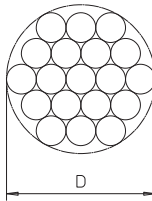


Type	Nominal size Ø mm	Cross-section mm ²	Normal ring ca. m	Normal ring ca. kg	Pack. m	Weight kg/100 m	Item No.
RD 8-CU	8	50	100	45	100	45.000	5021480
RD 10-CU	10	78	50	35	50	70.000	5021502

Cu Copper

- According to DIN EN 62561-2 (VDE 0185-561-2)
- Corresponds to the requirements of VDE 0185-305 (IEC 62305)

Copper cable



Type	Dimension D mm	Individual wires	Cross-section mm ²	Normal ring ca. m	Normal ring ca. kg	Pack. m	Weight kg/100 m	Item No.
S 11-CU	10.5	19x Ø 2,1	70	50	30	50	58.600	5021654
S 9-CU	9	19x Ø 1,8	50	100	45	100	45.000	5021652
S-11-CU SN	10.5	19x Ø 2,1	70	50	30	50	58.600	5021656

Cu Copper

Sn Tin-plated

- According to DIN EN 62561-2 (VDE 0185-561-2)
- Corresponds to the requirements of VDE 0185-305 (IEC 62305)