



MECHANICAL CONNECTORS AND REPAIR SLEEVES BSM

FOR LOW AND MEDIUM VOLTAGE APPLICATION UP TO 42 kV

KEY FEATURES

- Wide application range
- Compact design
- Can be used with almost every type of conductor and material
- Torque-controlled shear bolt heads guarantee an excellent electrical contact
- Easy installation with standard socket spanner
- Pre-engineered design for perfect fit in medium voltage cable accessories up to 42 kV
- Tested according to IEC 61238-1 class A

TE Connectivity's (TE) BSM mechanical connectors and repair sleeves are designed for use in low and medium voltage applications. Three sizes of our BSM connectors cover conductor sizes ranging from 25 mm² to 400 mm². Our connectors consist of a tin-plated body, shear bolt heads and inserts for small conductor sizes.

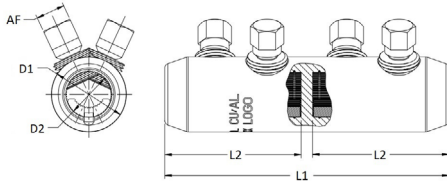
Made of special aluminium alloy, these contact bolts are double shear bolt heads with hexagon heads. The bolts are treated with a highly lubricating agent. Contact bolts are irremovable once their heads have been sheared off. The lug body is made of a high-tensile, tin-plated aluminium alloy. The internal surface of the conductor holes are grooved.

The connectors are chamfered at the edges and available with or without oil barrier (as blocked and unblocked types) depending on the application requirements. The bolted fitting featured herein was developed specifically for use in medium voltage cable accessories up to 42 kV. They may also be used in the 1 kV range.

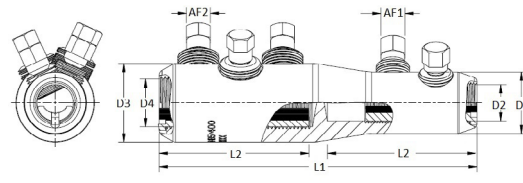
Before using mechanical connectors in cable accessories, confirm that they are suitable for the given application and if necessary consult our experts.

Customers can count on consistent, high quality products, driven by TE's proven innovation and backed by our extraordinary customer support.

Mechanical Connectors and Repair Sleeves BSM



Mechanical Connector

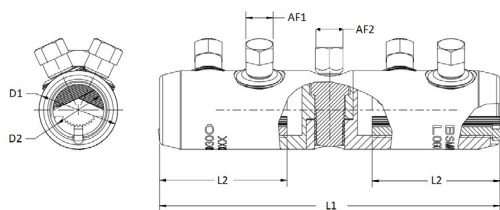


Reduction Connector

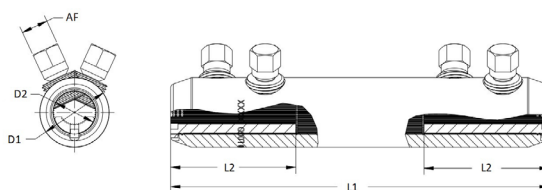
PRODUCT SELECTION INFORMATION

Description	Cross Sectional Range (mm ²)		Blocked	Dimensions (mm)						Contact Bolts Quantity		Head Size AF (mm)		
				L1	L2	D1	D2	D3	D4					
Mechanical Connectors														
BSMB-10/35	10 - 35		yes	45	20	19	8,5	-	-	-	2		10	
BSM-25/95	25 - 95		yes	65	30	24	12,8	-	-	-	2		10	
BSM-25/95-U	25 - 95		no	65	-	24	12,8	-	-	-	2		10	
BSMB-35/150	35 - 150		yes	80	35	28	15,8	-	-	-	2		13	
BSMU-35/150	35 - 150		no	80	-	28	15,8	-	-	-	2		13	
BSM-95/240	95 - 240		yes	125	60	33	20	-	-	-	4		13	
BSM-95/240-U	95 - 240		no	125	-	33	20	-	-	-	4		13	
BSMB-95/240-34	95 - 240		yes	125	60	34	22	-	-	-	4		13	
BSMB-95/300	95 - 300		yes	125	57,5	25	22,5	-	-	-	4		13	
BSMB-120/300	120 - 300		yes	140	65	37	24	-	-	-	4		13	
BSMU-120/300	120 - 300		no	140	-	37	24	-	-	-	4		13	
BSMB-150/400	150 - 400		yes	170	80	42	25,5	-	-	-	6		13	
BSMU-150/400	150 - 400		no	170	-	42	25,5	-	-	-	6		13	
BSMB-500mk2	500		yes	160	70	46	30	-	-	-	6		13	
BSMB-630mk2	630		yes	160	70	50	33	-	-	-	6		13	
BSMB-800mk2	800		yes	180	85	56	36	-	-	-	8		13	
BSMB-1000	1000		yes	180	85	60	40	-	-	-	8		13	
Reduction Connectors														
	Side 1	Side 2									Side 1	Side 2	AF 1	AF 2
BSMB 25/95-95/240	25 - 95	95 - 240	yes	125	60	24	12,8	33	20		1	2	10	13
BSMB-25/95-120/300	25 - 95	120 - 300	yes	140	65	24	12,8	37	24		1	2	10	13
BSMB-95/240-34-120/300	95 - 240	120 - 300	yes	140	65	34	22	37	24		2	2	13	13
BSMB 95/240-185/400	95 - 240	185 - 400	yes	170	80	33	20	42	25,5		2	3	13	13
BSMB-95/240-34-500	95 - 240	500	yes	160	70	34	22	46	30		2	3	13	13
BSMB 150/400-500	150 - 400	500	yes	170	80	42	25,5	46	30		3	3	13	13
BSMB 150/400-630	150 - 400	630	yes	170	80	42	25,5	50	33		3	3	13	13
BSMB 500-630mk2	500	630	yes	160	70	46	30	50	33		3	3	13	13
BSMB 500-800	500	800	yes	180	85	46	30	56	36		3	4	13	13
BSMB 630-800	630	800	yes	180	85	50	33	56	36		3	4	13	13
BSMB 630-1000	630	1000	yes	180	85	50	33	60	40		3	4	13	13
BSMB 800-1000	800	1000	yes	180	85	56	36	60	40		3	4	13	13

Mechanical Connectors and Repair Sleeves BSM



Split Connector



Mechanical Repair Connector

PRODUCT SELECTION INFORMATION

Description	Cross Sectional Range (mm ²)	Blocked	Dimensions (mm)						Contact Bolts Quantity		Head Size AF (mm)				
			L1	L2	D1	D2	D3	D4	Contact	Central	AF 1	AF 2			
Split Connectors															
BSMV-95/240-RS	95 - 240	yes	160	65	37	24	-	-	4	1	15	21			
BSMV-120/300	120 - 300	yes	160	65	37	24	-	-	4	1	13	13			
BSMV-150/400	150 - 400	yes	190	80	42	25,5	-	-	6	1	13	13			
BSMV-630-MREM	630	yes	180	70	50	33	-	-	6	1	13	13			
Mechanical Repair Sleeves															
BSM-25/95-U-L440	25 - 95	no	440	30	24	12,8	-	-	2		10				
BSM-95/240-U-L440	95 - 240	no	440	60	33	20	-	-	4		13				
BSMU-95/240-34-L440	95 - 240	no	440	60	34	22	-	-	4		13				
BSMU-120/300-L440	120 - 300	no	440	65	37	24	-	-	4		13				
BSM-185/400-U-L440	185 - 400	no	440	80	42	25,5	-	-	6		13				
BSMB-150/400-L440	150 - 400	yes	440	80	42	25,5	-	-	6		13				
BSMB-500 MK2-L440	500	yes	440	70	46	30	-	-	6		13				

Learn more: [TE.com/energy](https://www.te-connectivity.com/energy)

© 2021 TE Connectivity. All Rights Reserved. EPP-2287-DDS-11/21

TE, TE Connectivity, TE connectivity (logo), EVERY CONNECTION COUNTS are trademarks owned or licensed by TE Connectivity. Other logos, product and company names mentioned herein may be trademarks of their respective owners. While TE has made every reasonable effort to ensure the accuracy of the information in this brochure, TE does not guarantee that it is error-free, nor does TE make any other representation, warranty or guarantee that the information is accurate, correct, reliable or current. TE reserves the right to make any adjustments to the information contained herein at any time without notice. TE Connectivity's obligations shall only be as set forth in TE Connectivity's Standard Terms and Conditions of Sale for this product and in no case will TE Connectivity be liable for any incidental, indirect or consequential damages arising out of the sale, resale, use or misuse of the product. TE expressly disclaims all implied warranties regarding the information contained herein, including, but not limited to, any implied warranties of merchantability or fitness for a particular purpose. The dimensions, specifications, and/or information contained herein are for reference purposes only and are subject to change without notice. Consult TE for the latest dimensions, specifications, and/or information. Users of TE Connectivity products should make their own evaluation to determine the suitability of each such product for the specific application.

Connect with us:

[TE.com/energy-contact](https://www.te-connectivity.com/energy-contact)