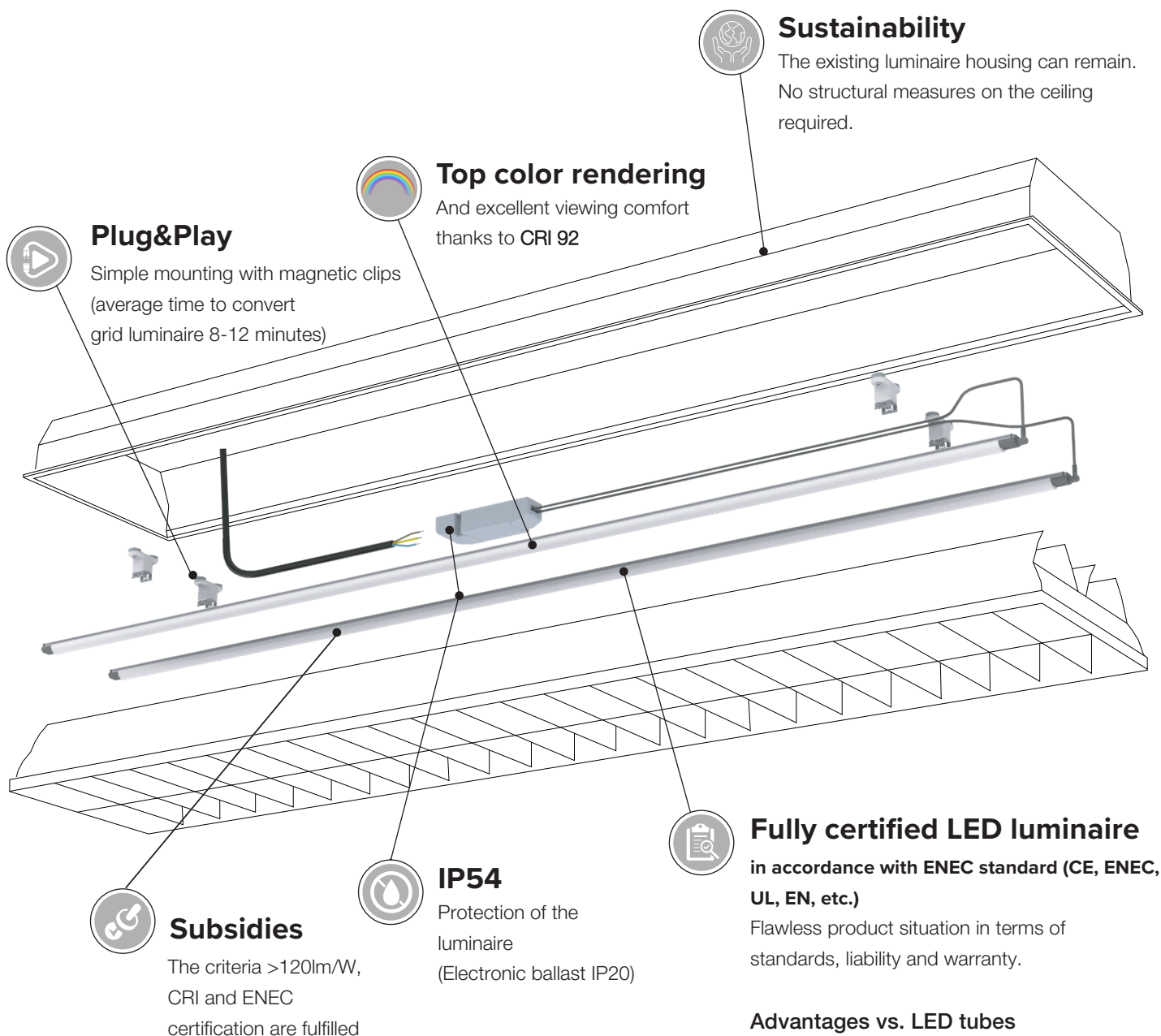
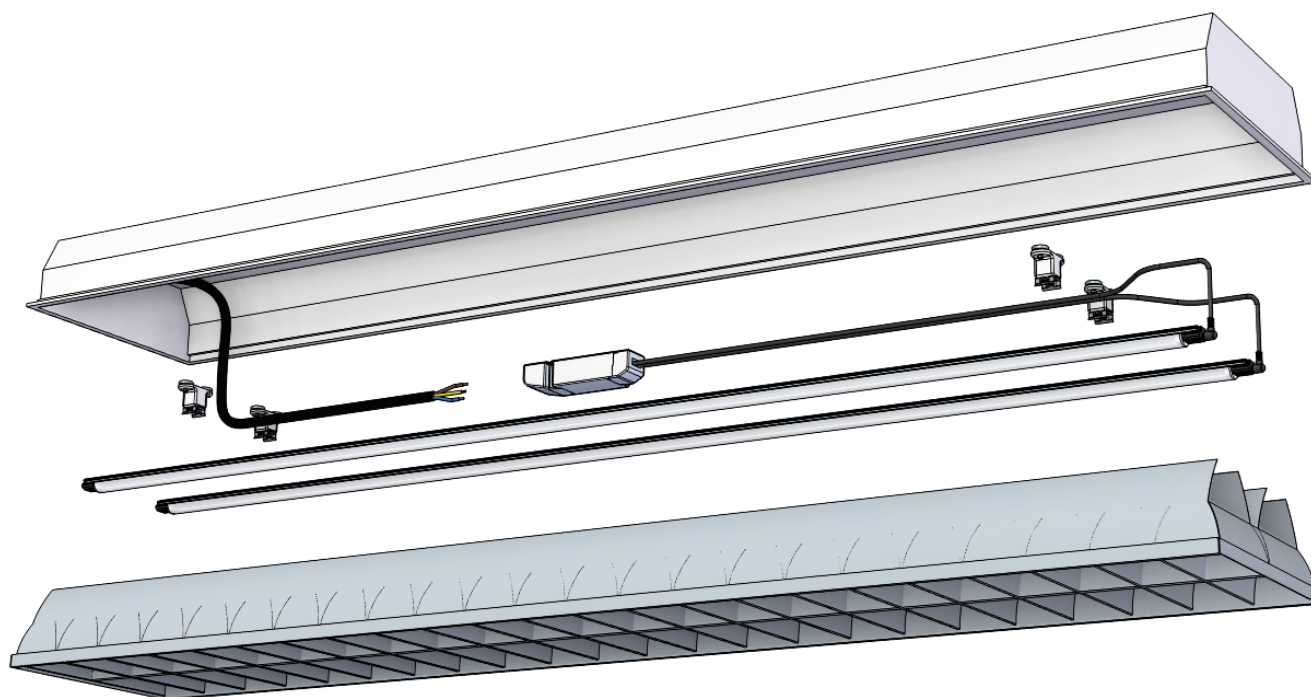


DATASHEET - WELIGHT REFIT GRID LUMINAIRES



III WELIGHT REFIT SET



III YOUR INNOVATIVE SOLUTION

We offer REFIT Sets with the latest LED technology and guarantee simple and safe handling as a solution to replace the conventional light sources (T5, T8) in existing grid luminaires for further use.

A sustainable solution with recycling of original luminaire housing and minimal impact on the environment.

Your benefits at a glance:

- High efficiency lighting solution up to 180 lm/W
- Energy savings up to 70% compared to a fluorescent tube
- Energy savings up to 30% compared to a LED tube
- Directed light without further losses (symmetrical 120° beam angle)
- Re-use of the existing luminaire housing - no structural modifications required
- Plug&Play solution - contains luminaire(s), operating unit, cabling and magnetic holders
- Fully certified luminaires (CE, ENEC, UL, etc.)
- Excellent light quality with CRI 92
- Flicker-free illumination
- "Made in Europe" - in accordance with relevant environmental and sustainability regulations (carbon footprint)
- CRI >80 and ENEC certification fulfilled
- Standard On/Off driver. Your choice of Tridonic LED driver 24V: DALI or wireless

III TECHNICAL DATA | ORDERING INFORMATION - WELIGHT REFIT SET INCLUDES DRIVER*

*For DALI driver add: -DA to the end of the article code of the REFIT Set. For Casambi driver add: -CA. For Matter driver add: -MA

1 luminaire Art.No. Set	Type of Set	Luminaires Length	Luminous flux*	Typically replaces
W1401-940-IP54	Welight 6W LED REFIT SET for 18W T8 4000K On/Off 18W 24V	562mm	1x 900lm	1x 18W, T8, 600mm
W1402-940-IP54	Welight 13W LED REFIT SET for 36W T8 4000K On/Off 18W 24V	1170mm	1x 1970lm	1x 36W, T8, 1200mm
W1403-940-IP54	Welight 22W LED REFIT SET for 58W T8 4000K On/Off 35W 24V	1450mm	1x 3260lm	1x 58W, T8, 1500mm
W1404-940-IP54	Welight 6W LED REFIT SET for 14W T5 HE 4000K On/Off 18W 24V	516mm	1x 820lm	1x 14W, T5 HE, 550mm
W1405-940-IP54	Welight 8W LED REFIT SET for 21W T5 HE 4000K On/Off 18W 24V	843mm	1x 1170lm	1x 21W, T5 HE, 850mm
W1406-940-IP54	Welight 13W LED REFIT SET for 28W T5 HE 4000K On/Off 18W 24V	1124mm	1x 1890lm	1x 28W, T5 HE, 1150mm
W1407-940-IP54	Welight 13W LED REFIT SET for 35W T5 HE 4000K On/Off 18W 24V	1450mm	1x 2060lm	1x 35W, T5 HE, 1450mm
W1408-940-IP54	Welight 7W LED REFIT SET for 24W T5 HO 4000K On/Off 18W 24V	516mm	1x 1090lm	1x 24W, T5 HO, 550mm
W1409-940-IP54	Welight 12W LED REFIT SET for 39W T5 HO 4000K On/Off 18W 24V	843mm	1x 1850lm	1x 39W, T5 HO, 850mm
W1410-940-IP54	Welight 18W LED REFIT SET for 49W T5 HO 4000K On/Off 18W 24V	1450mm	1x 2740lm	1x 49W, T5 HO, 1450mm
W1411-940-IP54	Welight 21W LED REFIT SET for 54W T5 HO 4000K On/Off 35W 24V	1124mm	1x 3040lm	1x 54W, T5 HO, 1150mm
W1412-940-IP54	Welight 28W LED REFIT SET for 80W T5 HO 4000K On/Off 35W 24V	1450mm	1x 3970lm	1x 80W, T5 HO, 1450mm
W1413-940-IP54	Welight 6W LED REFIT SET for 13W T5 HE ECO 4000K On/Off 18W 24V	516mm	1x 820lm	1x 13W, T5 HE ECO, 550mm
W1414-940-IP54	Welight 13W LED REFIT SET for 25W T5 HE ECO 4000K On/Off 18W 24V	1124mm	1x 1890lm	1x 25W, T5 HE ECO, 1150mm
W1415-940-IP54	Welight 13W LED REFIT SET for 32W T5 HE ECO 4000K On/Off 18W 24V	1450mm	1x 2060lm	1x 32W, T5 HE ECO, 1450mm
W1416-940-IP54	Welight 7W LED REFIT SET for 20W T5 HO ECO 4000K On/Off 18W 24V	516mm	1x 1090lm	1x 20W, T5 HO ECO, 550mm
W1417-940-IP54	Welight 18W LED REFIT SET for 45W T5 HO ECO 4000K On/Off 18W 24V	1450mm	1x 2740lm	1x 45W, T5 HO ECO, 1450mm
W1418-940-IP54	Welight 21W LED REFIT SET for 50W T5 HO ECO 4000K On/Off 35W 24V	1124mm	1x 3040lm	1x 50W, T5 HO ECO, 1150mm
W1419-940-IP54	Welight 28W LED REFIT SET for 73W T5 HO ECO 4000K On/Off 35W 24V	1450mm	1x 3970lm	1x 73W, T5 HO ECO, 1450mm
2 luminaires Art.No. Set				
W1420-940-IP54	Welight 2x6W LED REFIT SET for 2x18W T8 4000K On/Off 18W 24V	2x 562mm	2x 900lm	2x 18W, T8, 600mm
W1421-940-IP54	Welight 2x14W LED REFIT SET for 2x36W T8 4000K On/Off 35W 24V	2x 1170mm	2x 1970lm	2x 36W, T8, 1200mm
W1422-940-IP54	Welight 2x21W LED REFIT SET for 2x58W T8 4000K On/Off 60W 24V	2x 1450mm	2x 3260lm	2x 58W, T8, 1500mm
W1423-940-IP54	Welight 2x6W LED REFIT SET for 2x14W T5 HE 4000K On/Off 18W 24V	2x 516mm	2x 820lm	2x 14W, T5 HE, 550mm,
W1424-940-IP54	Welight 2x8W LED REFIT SET for 2x21W T5 HE 4000K On/Off 18W 24V	2x 843mm	2x 1170lm	2x 21W, T5 HE, 850mm
W1425-940-IP54	Welight 2x13W LED REFIT SET for 2x28W T5 HE 4000K On/Off 35W 24V	2x 1124mm	2x 1890lm	2x 28W, T5 HE, 1150mm
W1426-940-IP54	Welight 2x14W LED REFIT SET for 2x35W T5 HE 4000K On/Off 35W 24V	2x 1450mm	2x 2060lm	2x 35W, T5 HE, 1450mm
W1427-940-IP54	Welight 2x7W LED REFIT SET for 2x24W T5 HO 4000K On/Off 18W 24V	2x 516mm	2x 1090lm	2x 24W, T5 HO, 550mm
W1428-940-IP54	Welight 2x12W LED REFIT SET for 2x39W T5 HO 4000K On/Off 35W 24V	2x 843mm	2x 1850lm	2x 39W, T5 HO, 850mm
W1429-940-IP54	Welight 2x18W LED REFIT SET for 2x49W T5 HO 4000K On/Off 35W 24V	2x 1450mm	2x 2740lm	2x 49W, T5 HO, 1450mm
W1430-940-IP54	Welight 2x20W LED REFIT SET for 2x54W T5 HO 4000K On/Off 60W 24V	2x 1124mm	2x 3040lm	2x 54W, T5 HO, 1150mm
W1431-940-IP54	Welight 2x26W LED REFIT SET for 2x80W T5 HO 4000K On/Off 60W 24V	2x 1450mm	2x 3970lm	2x 80W, T5 HO, 1450mm
W1432-940-IP54	Welight 2x6W LED REFIT SET for 2x13W T5 HE ECO 4000K On/Off 18W 24V	2x 516mm	2x 820lm	2x 13W, T5 HE ECO, 550mm
W1433-940-IP54	Welight 2x13W LED REFIT SET for 2x25W T5 HE ECO 4000K On/Off 35W 24V	2x 1124mm	2x 1890lm	2x 25W, T5 HE ECO, 1150mm
W1434-940-IP54	Welight 2x14W LED REFIT SET for 2x32W T5 HE ECO 4000K On/Off 35W 24V	2x 1450mm	2x 2060lm	2x 32W, T5 HE ECO, 1450mm
W1435-940-IP54	Welight 2x7W LED REFIT SET for 2x20W T5 HO ECO 4000K On/Off 18W 24V	2x 516mm	2x 1090lm	2x 20W, T5 HO ECO, 550mm
W1436-940-IP54	Welight 2x18W LED REFIT SET for 2x45W T5 HO ECO 4000K On/Off 35W 24V	2x 1450mm	2x 2740lm	2x 45W, T5 HO ECO, 1450mm
W1437-940-IP54	Welight 2x20W LED REFIT SET for 2x50W T5 HO ECO 4000K On/Off 60W 24V	2x 1124mm	2x 3040lm	2x 50W, T5 HO ECO, 1150mm
W1438-940-IP54	Welight 2x26W LED REFIT SET for 2x73W T5 HO ECO 4000K On/Off 60W 24V	2x 1450mm	2x 3970lm	2x 73W, T5 HO ECO, 1450mm

■ TECHNICAL DATA | ORDERING INFORMATION - WELIGHT REFIT SET INCLUDES DRIVER*

*For DALI driver add: -DA to the end of the article code of the REFIT Set. For Casambi driver add: -CA. For Matter driver add: -MA

3 luminaires Art.No. Set	Type of Set	Luminaires Length	Luminous flux*	Typically replaces
W1439-940-IP54	Welight 3x6W LED REFIT SET for 3x18W T8 4000K On/Off 18W 24V	3x 562mm	3x 900lm	3x 18W, T8, 600mm
W1440-940-IP54	Welight 3x6W LED REFIT SET for 3x14W T5 HE 4000K On/Off 18W 24V	3x 516mm	3x 820lm	3x 14W, T5 HE, 550mm
W1441-940-IP54	Welight 3x7W LED REFIT SET for 3x24W T5 HO 4000K On/Off 35W 24V	3x 516mm	3x 1090lm	3x 24W, T5 HO, 550mm
W1442-940-IP54	Welight 3x6W LED REFIT SET for 3x13W T5 HE ECO 4000K On/Off 18W 24V	3x 516mm	3x 820lm	3x 13W, T5 HE ECO, 550mm
W1443-940-IP54	Welight 3x7W LED REFIT SET for 3x20W T5 HO ECO 4000K On/Off 35W 24V	3x 516mm	3x 1090lm	3x 20W, T5 HO ECO, 550mm
4 luminaires Art.No. Set				
W1444-940-IP54	Welight 4x6W LED REFIT SET for 4x18W T8 4000K On/Off 35W 24V	4x 562mm	4x 900lm	4x 18W, T8, 600mm
W1445-940-IP54	Welight 4x6W LED REFIT SET for 4x14W T5 HE 4000K On/Off 35W 24V	4x 516mm	4x 820lm	4x 14W, T5 HE, 550mm
W1446-940-IP54	Welight 4x7W LED REFIT SET for 4x24W T5 HO 4000K On/Off 35W 24V	4x 516mm	4x 1090lm	4x 24W, T5 HO, 550mm
W1447-940-IP54	Welight 4x6W LED REFIT SET for 4x13W T5 HE ECO 4000K On/Off 35W 24V	4x 516mm	4x 820lm	4x 13W, T5 HE ECO, 550mm
W1448-940-IP54	Welight 4x7W LED REFIT SET for 4x20W T5 HO ECO 4000K On/Off 35W 24V	4x 516mm	4x 1090lm	4x 20W, T5 HO ECO, 550mm

- *Measurement with laboratory power supply
- All typical values for Ta=25°C +/- 2°C
- Luminous flux min. value = typ. value - 20%
- Tolerance mechanical dimensions +/- 1mm
- Tolerance electrical data +/- 15%
- Tolerance optical data +/- 15%
- Tolerance min. value CRI +1/-1
- Energy efficiency class (valid for light source): up to 80mA=C, from 100mA=D

■ OTHER LIGHT COLORS AVAILABLE ON REQUEST:

4000K is standard

CCT	2700K	3000K	5000K	6500K
-----	-------	-------	-------	-------

The version with 3000 K is also available for order. It has the same article code as the 4000 K variant but you use -930- instead of -940-.

■ WELIGHT RE-FIT INCLUDES

Your choice of set with:

- LEDlines to replace the fluorescent tubes in the existing luminaire
- 2x Magnetic fixing plates per LEDline
For the 1450 mm LEDline, 3 fixing plates is needed per LEDline
- Feeder cable and Bridge cable
- When using LED driver of 60W or 100W
– 2x Feeder cables required and no bridge cable



1-light luminaire – with 1 feeder cable



2-light luminaire with 60W LED driver
– with 2 feeder cables



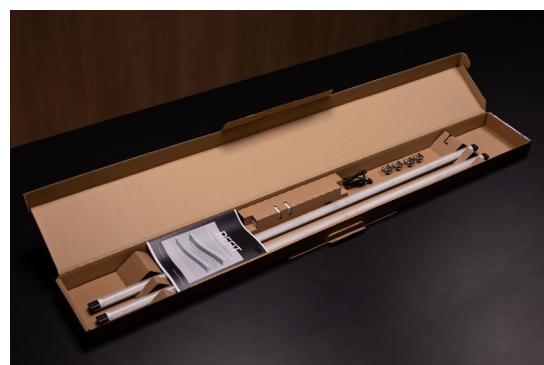
2-light luminaire with 35W LED driver
– with 1 feeder cable and 1 bridge cable



3 or 4-light luminaire
– with 1 feeder cable and 2-3 bridge cables

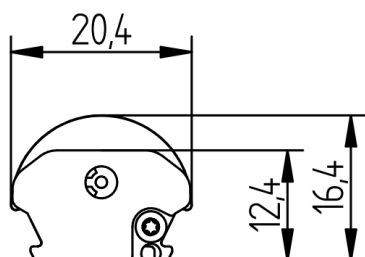
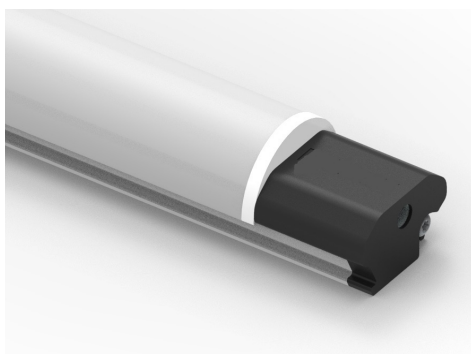
Your choice of LED driver

- Tridonic LED driver 24V with suitable power. On/Off is standard.
Choose between Dimmable: one4all DALI/DSI, Casambi bDW, Matter.
See page 6 for an overview of available drivers.



For the dimmable solutions you can order the Set with the same article code by adding the ending:
-DA for DALI, -CA for Casambi, -MA for Matter

■ LUMINAIRE - LEDline



■ LUMINAIRE DESCRIPTION

- Suitable for the retrofitting of fluorescent tubes or LED tubes
- Ready-to-connect solution available, thanks to Cinch Connection System
- High operational performance due to directional lighting & integrated heat dissipation
- Excellent product illumination thanks to the combination of SMD LEDs and innovative optics
- Safe-use operation due to safety extra-low voltage (SELV)
- Simple installation with application of magnetic fixing plates
- Heat sink profile made of extruded aluminum
- LED modules protected against moisture & dust by conformal coating
- End caps made of PBT
- Cover made of PMMA
- Dimming capability

■ TECHNICAL DATA

Supply voltage	24VDC
Ambient temperature t_a	-30 ... +30 °C
Max. surface temperature profile t_c	60 °C
Type of protection	IP54
Protection class	III
Risk group [EN 62471:2008]	0



■ LIFETIME

70000h (L80 B10)

■ STANDARDS

- EN 60598-1
- EN 60598-2-1
- EN 62031
- EN 62471
- EN 60335-1, EN 60335-2-24, EN 60335-2-89
- Eco Design 2019/2020 (SLR)
- Energy Labeling 2019/2015 (ELR)
- PRP/HACCP (Food Safety)
- RoHS/Reach
- ENEC, UL

■ TEMPERATURE BEHAVIOR

Operating temperature [operation, no defects]	t_a	-30 ... +30 °C
Storage temperature	t_s	-30 ... +60 °C
Temperature cooling profile ¹²	t_c	-30 ... +60 °C

¹ Values apply to operation at 100% output, natural convection.

² If the maximum temperature limits are exceeded, the lifetime of the module will be greatly reduced or the module may be destroyed. The t_c point temperature at the profile of the light engine should be measured in the thermally stable state and under operating conditions by means of a temperature sensor or temperaturesensitive sticker in accordance with EN60598-1. The entire profile can be used as the t_c point.



Note

- Installation should only be conducted by a licensed electrician.
- Reversing the polarity can damage the product!
- Make sure the converter has been switched off prior to connecting the light engine. If this is not observed, the light engine may be damaged!
- Connection or operation is only permitted when using the specified converters. Higher voltages result in damage to or failure of the light engine.
- The user is responsible for correct selection of illumination intensity. Excessive illumination intensity may lead to greying or colour changes of displayed products.
- Our accessories must be used.
Accessories (e.g. cables) from other manufacturers can lead to failures and damage. The use of these parts will void any warranty claim!
- Luminaires must not be installed next to a cooling or heating outlet!

LED DRIVER INCL. FEEDER CABLE



- Not dimmable driver: on/off via mains (standard solution)
- Dimmable drivers:
 - Digital dimming via DALI, DSI, switchDIM, corridorFUNCTION
 - Wireless control via Casambi Bluetooth mesh
 - Wireless control via Matter Thread protocol
- Magnetic mounting for the driver on request
- "In-built" driver available on request when there is limited space in the luminaire

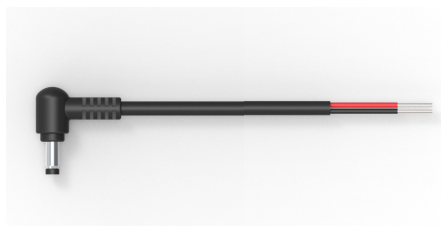
ORDERING INFORMATION

Watt	On / Off	one4all	Casambi bDW	Matter
Driver 18W item no.	87500931-S1073	28003517-S1076	35W: 28002415-S1079	35W: 28004485-S1081
Driver 35W item no.	87500852-S1074	28001662-S1077	28002415-S1079	28004485-S1081
Driver 60W item no.	87500665-S1075	28001663-S1078	28002416-S1080	28004486-S1082

LED driver 24V is also available with power of 100W, 150W and 200W

- Driver dimensions 18W: 127 / 130 x 43 x 30mm
- Driver dimensions 35W: 142 / 195 x 43 x 30mm
- Driver dimensions 60W: 225 x 43 x 30mm

FEEDER CABLE



- Power supply cable for connecting a linear LED luminaire with Quick connector to a driver
- The power supply cable is already connected to the driver

ORDERING INFORMATION

Length	Weight	Type	Item no.
530mm	30g	LED Feeder angled Quick connector 530	89601612

BRIDGE CABLE

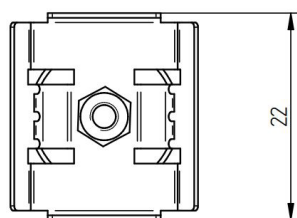
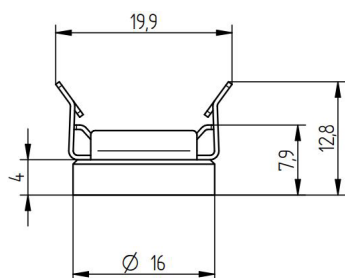


- Bridge to connect two luminaires with Quick connector

ORDERING INFORMATION

Length	Weight	Type	Item no.
200mm	9g	LED Bridge angled Quick connector 200	89601625

■ PLATE METAL 0° MAGNETIC



- Mounting holder with 0° angle & magnet
- Material: Metal

■ TECHNICAL DATA

Ambient temperature in installed condition	-30 ... +80 °C
Ambient temperature during assembly of the luminaire or profile	+10 ... +30 °C
Dimensions L x W x H	22 x 19.9 x 12.8mm
Weight	0.009kg

RoHS

■ ORDERING INFORMATION

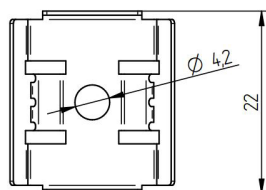
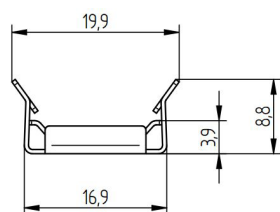
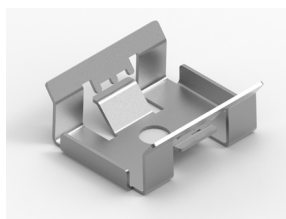
Type	Item no.
LED FIXING PLATE METAL 0° Magnetic	88167382

Packaging: 50 pcs./pack, 1000 pcs./box

Also available in multi packaging: 2 pcs, 4 pcs, 6 pcs or 8 pcs / bag, including drill screw

■ AVAILABLE ON REQUEST

■ PLATE METAL 0°



- Mounting holder with 0° angle
- Material: Metal
- Assembly: By means of self-tapping sheet metal screws

■ TECHNICAL DATA

Ambient temperature in installed condition	-30 ... +80 °C
Ambient temperature during assembly of the luminaire or profile	+10 ... +30 °C
Dimensions L x W x H	22 x 19.9 x 8.8mm
Weight	0.002kg

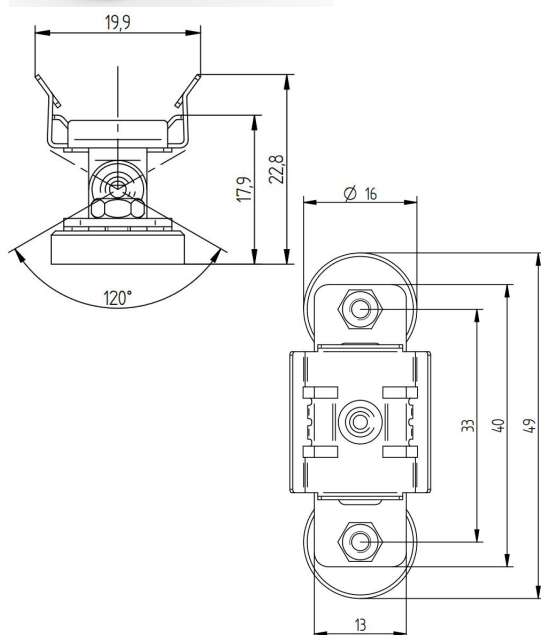
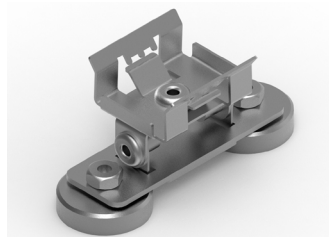
RoHS

■ ORDERING INFORMATION

Type	Item no.
LED FIXING PLATE METAL 0°	88167376

Packaging: 50 pcs./pack, 1000 pcs./box

III PLATE METAL ADJUSTABLE MAGNETIC



- Magnetic mounting plate
- Material: Metal
- Angle adjustable from -60° to +60°

III TECHNICAL DATA

Ambient temperature in installed condition	-30 ... +80 °C
Ambient temperature during assembly of the luminaire or profile	+10 ... +30 °C
Dimensions L x W x H	49 x 19.9 x 22.8mm
Weight	0.024kg

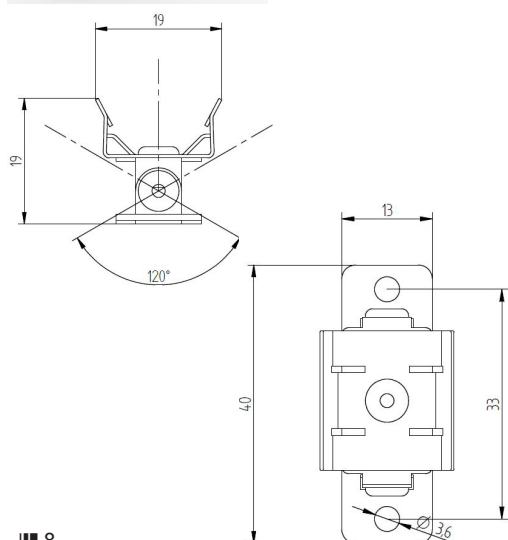
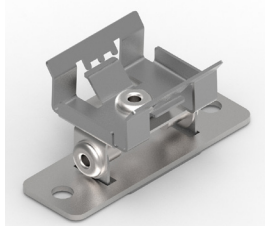
RoHS

III ORDERING INFORMATION

Type	Item no.
LED MAGNETIC PLATE METAL - adjustable	88167385

Packaging: 100 pcs./box

III PLATE METAL ADJUSTABLE



- Mounting plate
- Material: Metal
- Angle adjustable from -60° to +60°

III TECHNICAL DATA

Ambient temperature in installed condition	-30 ... +80 °C
Ambient temperature during assembly of the luminaire or profile	+10 ... +30 °C
Dimensions L x W x H	40 x 19 x 19mm
Weight	0.010kg

RoHS

III ORDERING INFORMATION

Type	Item no.
LED FIXING PLATE METAL - adjustable	88167384

Packaging: 1000 pcs./box