

FONTO 2005

Floor socket outlet with hinged cover, level-adjustable frame and cable outlet (Levelling support available optionally)



Technical data

Dimensions (l×w×h):	110×95×75 mm
Mounting depth:	approx. 75 mm (standard version)
– level-adjustable:	72 - 78 mm
– with levelling support:	88 - 130 mm
– with threaded pin extension:	88* - 230 mm
Material:	Aluminium natural
IP protection class:	
– in closed mode:	IP20, only dry cleaning
– plugged in mode:	IP20, only dry cleaning
Cover:	Hinged cover, lid hinge bar
Cover closure type:	Philips screw
Cable outlet:	yes
Load capacity:	
– in closed mode:	2t (20kN)
Max. conductor cross-section:	defined by used module
Feed-in cable:	2×M25
Level-adjustable after installation:	yes (+/-3 mm)
Levelling support:	yes (optionally)

Remarks/Features

- level-adjustable frame (+/-3 mm) in the offset position for simple adjustment to the finished floor level
- flush mounted floor socket with hinged cover incl. 1×cable outlet
- for 1×insert 45×45×4 mm (e.g. T23, Schuko, RJ45, TV, HDMI, USB etc.)
- suitable for drive-over in closed mode
- 2×centre punch marks for additional holes in the bottom of the housing
- **not** suitable for sockets according to British standard!

Assortment

FONTO 2005 Floor socket outlet with hinged cover, with cable outlet, closed IP20, **aluminium, grinded**, 110×95×75 mm

Item no.	Description	Equipment
✓ 840891	FONTO 2005	without equipment
840976	FONTO 2005	1×T23
840977	FONTO 2005	1×Schuko

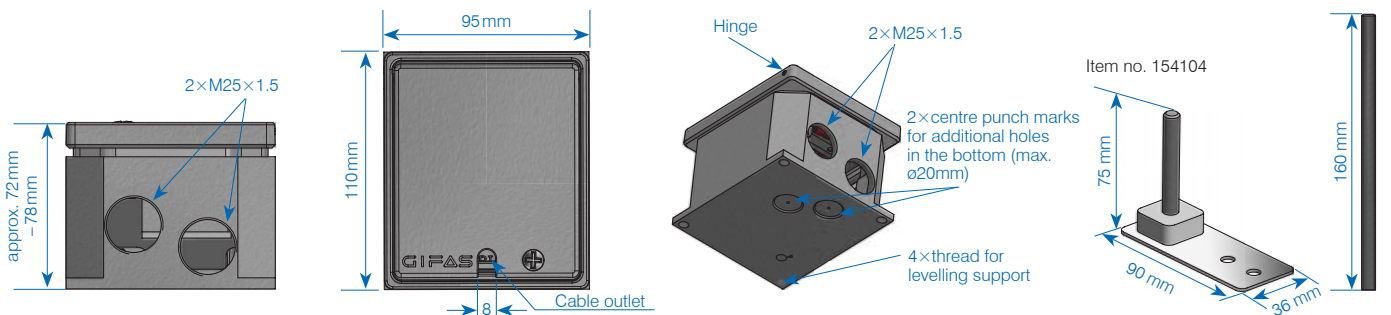
Other fitting options on request

Accessories / spare parts

✓ 154104	FONTO/MASSO Jackscrew levelling support: 1×baseplate and 1×threaded pin M8×60
✓ 840768	FONTO / MASSO Threaded pin extension M8×160 mm zinc-plated

Shorten threaded pin as required

FONTO/MASSO modules and accessories on page 20



Levelling feet are only used for setting the floor socket outlet. load capacity / stability is only obtained by backfilling the floor socket outlet with stable material (mortar, concrete...).

- ✓ From stock, offer subject to prior sale