

## Floor socket: 8601A

### Specification:

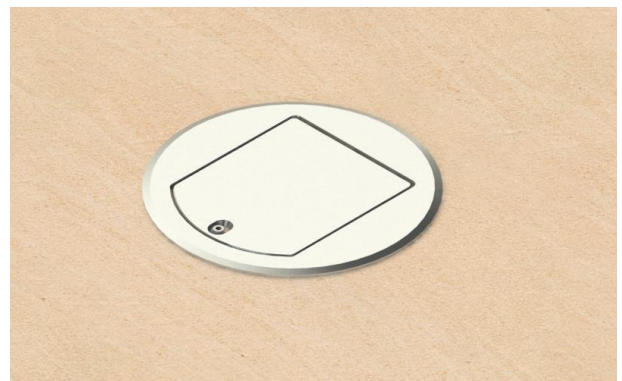
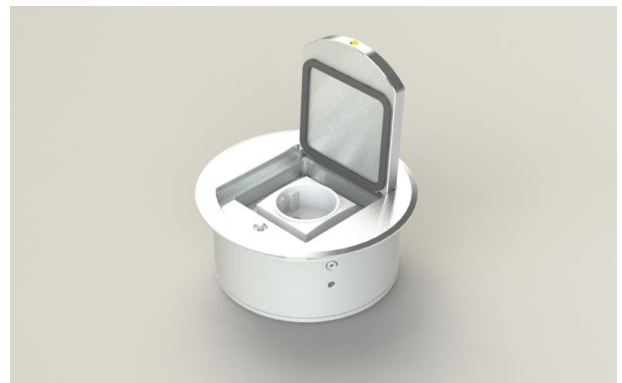
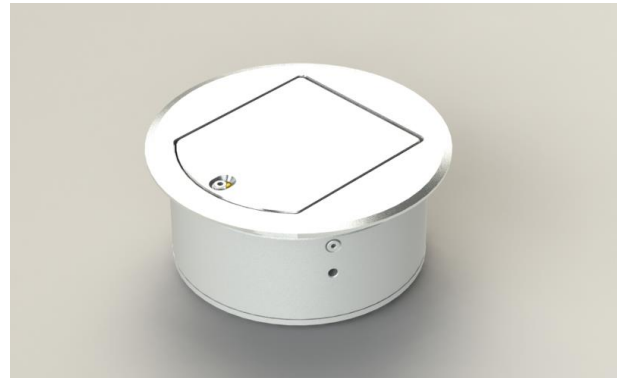
Item No:	8601A
Product line:	Floor socket
Units:	1
Mounting (qty):	1x SCHUKO socket with VDE certification
Construction:	Round
Ground:	<ul style="list-style-type: none"> <li>• Suitable for screed</li> <li>• Suitable for hollow floor</li> </ul>
Type of inst.:	Flush mounted
Lid character.:	<ul style="list-style-type: none"> <li>• Hinged</li> <li>• Toolless lockable</li> </ul>
Environment:	Wet sweepers usable
Protection:	IP65
EAN:	4058796000571

### Technical data:

Material:	<ul style="list-style-type: none"> <li>• Frame made of solid aluminum</li> <li>• Housing made of solid aluminum</li> <li>• Lid made of solid aluminum</li> <li>• Equipment carrier made of aluminum</li> </ul>
Colour:	Aluminum (nature)
Surface:	Anodised
Weight:	800g
Dimensions:	ø 140 x 63mm
Install. Dim.:	ø 120 x 60mm
Supply line:	2x bottom; Ø 25mm
Load:	900kg

### Features:

Delivery cond.:	Complete and pre-assembled
Opt. attachments:	Item No. 12105 - Plastic insert



*Errors and technical changes reserved.*