

## Floor box system: 8810B

### Specification:

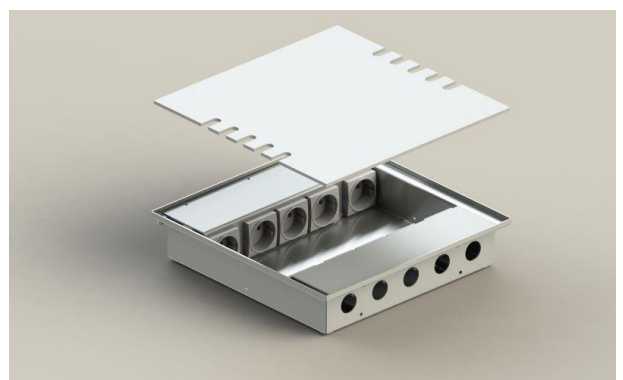
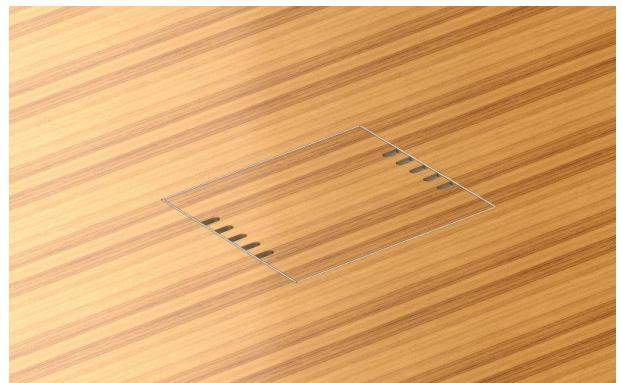
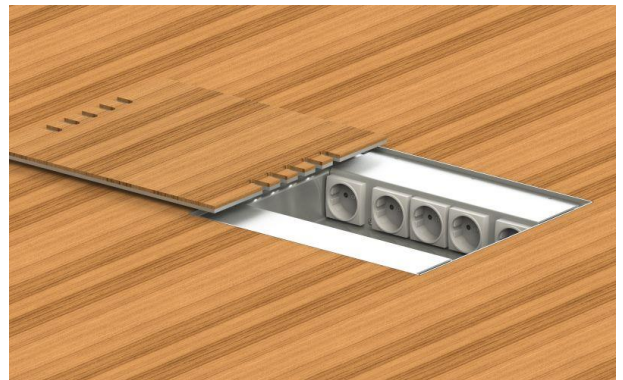
Item No:	8810B
Product line:	Floor box system
Units:	10
Mounting (qty):	10x SCHUKO socket with VDE certification
Construction:	Square
Ground:	Suitable for screed
Type of inst.:	Flush mounted
Lid character.:	<ul style="list-style-type: none"> <li>• Own floor covering applicable</li> <li>• Removable</li> <li>• Closable with plugged in plugs</li> </ul>
Floor cover. recess:	15mm
Environment:	Dry to moist
Protection:	IP20
EAN:	0706332879665

### Technical data:

Material:	<ul style="list-style-type: none"> <li>• Housing made of stainless steel (1,5mm / 1.4301)</li> <li>• Lid made of aluminum (4mm)</li> <li>• Equipment carrier made of aluminum</li> </ul>
Weight:	3300g
Dimensions:	300 x 300 x 62mm
Install. Dim.:	300 x 300 x 62mm
Height-adjustable:	5mm
Supply line:	10x lateral; Ø 25mm
Load:	200kg

### Features:

Delivery cond.:	Complete and pre-assembled
Opt. attachments:	



*Errors and technical changes reserved.*