

## Floor box system: 8900B

### Specification:

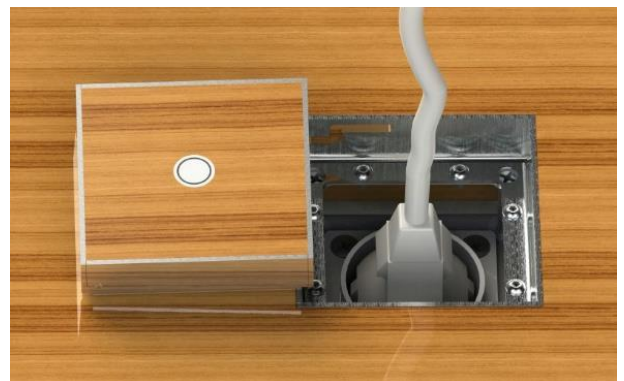
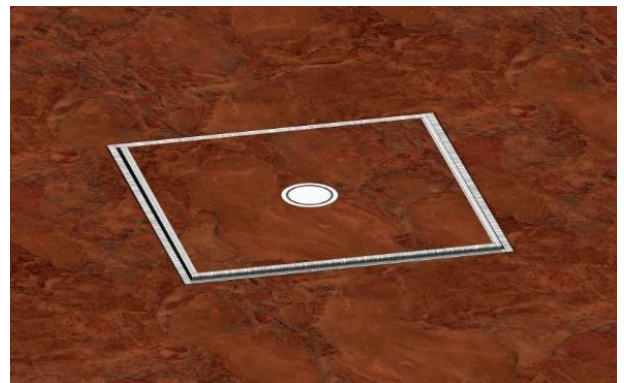
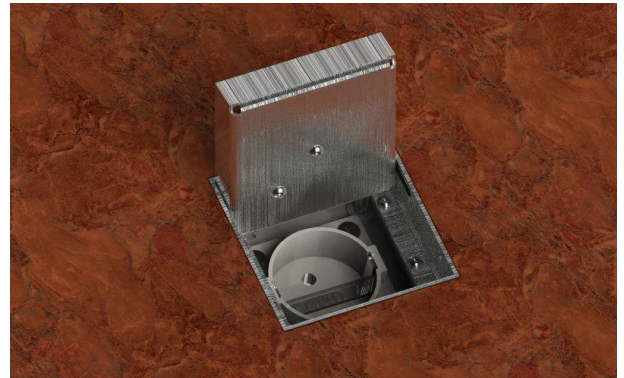
Item No:	8900B
Product line:	Floor box system
Units:	1
Mounting (qty):	1x SCHUKO socket with VDE certification
Construction:	Square
Ground:	Suitable for screed
Type of inst.:	Flush mounted
Lid character.:	<ul style="list-style-type: none"> <li>• Own floor covering applicable</li> <li>• Hinged</li> <li>• Removable</li> </ul>
Floor cover. recess:	15mm
Environment:	Dry to moist
Protection:	IP30
EAN:	4058796005415

### Technical data:

Material:	<ul style="list-style-type: none"> <li>• Adapter box made of galvanized steel sheet</li> <li>• Lid made of stainless steel (1,5mm / 1.4301)</li> <li>• Equipment carrier made of aluminum</li> </ul>
Colour:	Stainless steel
Surface:	Grindet
Weight:	500g
Dimensions:	76 x 78 x 85mm
Install. Dim.:	76 x 78 x 85mm
Height-adjustable:	20mm
Supply line:	1x front; 1x back; 2x bottom; Ø 25mm
Load:	120kg

### Features:

Delivery cond.:	Complete and pre-assembled
-----------------	----------------------------



*Errors and technical changes reserved.*