

Floor socket: 8804T

Specification:

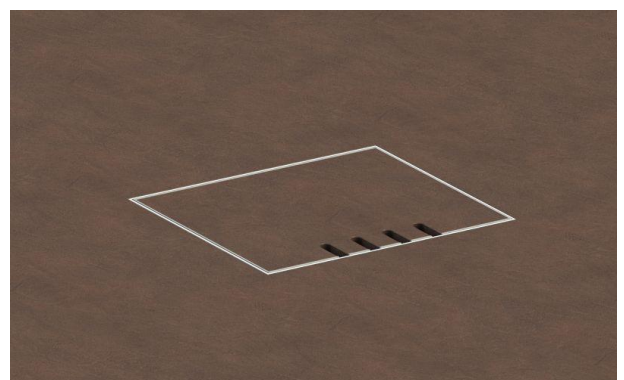
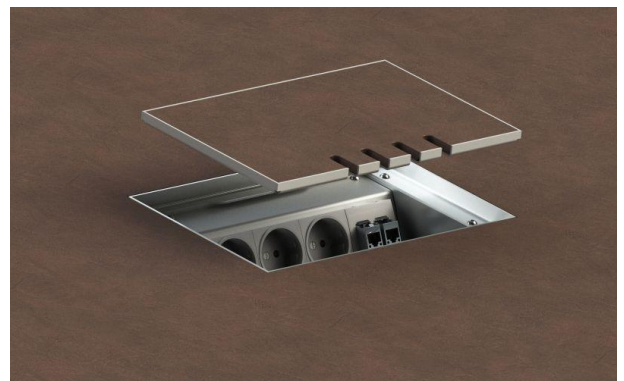
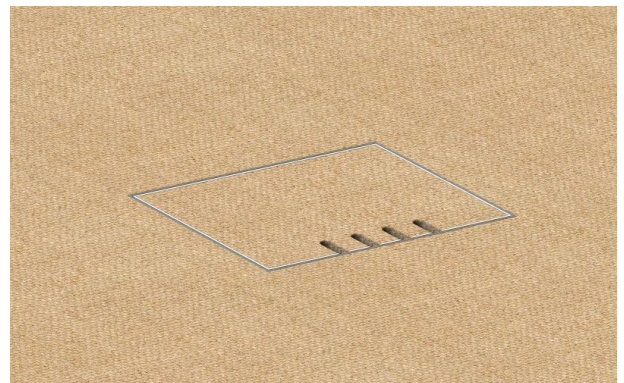
Item No:	8804T
Product line:	Floor socket
Units:	4
Mounting (qty):	4x SCHUKO socket with VDE certification
Construction:	Rectangular
Ground:	Suitable for screed
Type of inst.:	Flush mounted
Lid character.:	<ul style="list-style-type: none"> • Own floor covering applicable • Removable • Closable with plugged in plugs
Floor cover. recess:	6mm
Environment:	Dry to moist
Protection:	IP20
EAN:	4058796003534

Technical data:

Material:	<ul style="list-style-type: none"> • Housing made of solid aluminum • Lid made of stainless steel (1,5mm / 1.4301) • Equipment carrier made of aluminum
Colour:	Stainless steel
Surface:	Grindet
Weight:	2400g
Dimensions:	240 x 160 x 80mm
Install. Dim.:	240 x 160 x 80mm
Height-adjustable:	5mm
Supply line:	4x back; Ø 25mm
Load:	200kg

Features:

Delivery cond.:	Complete and pre-assembled
-----------------	----------------------------



Errors and technical changes reserved.