

MASSO 4000

Micro retraction distributor (Levelling support available optionally)



Technical data

Dimensions (l×w×h): 170×170×190 mm
 Mounting depth:
 - with levelling support: 190 mm
 - with threaded pin extension: 190* - 290 mm

Material: Aluminium, colourless anodised salt- and seawater-proof

IP protection class:
 - in closed mode: IP67, suitable for cleaning with wet sweepers, suitable for drive-over
 - plugged in mode: Up to IP54, depending on equipment, suitable for stand-on

Cover:
 Cover closure type: Screwable lid
 Cable outlet: Lift grip
 Load capacity: no

- in closed mode: 4t (40 kN)
 Feed-in cable: 3×M32
 Level-adjustable after installation: no
 Levelling support: yes (optionally)

Remarks / Features

- micro retraction distributor for flush ground mounting
- 3×centre punch marks
- for additional holes ø25 mm and 2×centre punch marks for additional holes ø32 mm in bottom part of housing

Assortment

MASSO 4000 retractable floor socket outlet, closed IP67, anodised aluminium, 170×170×190 mm, incl. key, cannot be closed when plugged in

Item no.	Description	Equipment
840912	MASSO 4000	without equipment
✓ 840950	MASSO 4000	4×T23
✓ 840954	MASSO 4000	3×T23, 2×RJ45
✓ 840949	MASSO 4000	4×Schuko
840953	MASSO 4000	2×Schuko, 2×RJ45
840970	MASSO 4000	4×British Standard 13 A

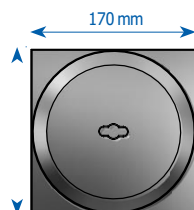
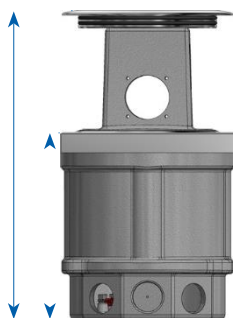
Other fitting options on request

Accessories / spare parts

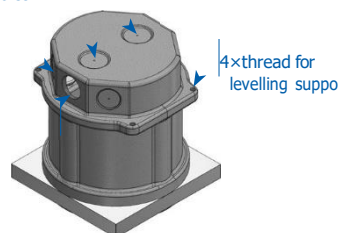
✓ 154104	FONTO/MASSO Jackscrew levelling support: 1×baseplate and 1×threaded pin M8×60
✓ 840768	FONTO / MASSO Threaded pin extension M8×160 mm zinc-plated

Shorten threaded pin as required

FONTO / MASSO modules and accessories on page 20



2×centre punch marks for additional holes (max. ø32 mm)
 3×Centre punch marks for additional holes (max. ø25 mm)



Item no. 840768

Item no. 154104

