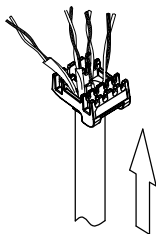
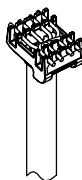


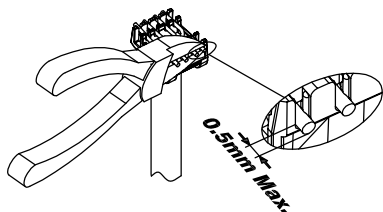
**Step 1:**  
Strip off at least 25mm of jacket from end of cable.  
**NOTE:** IDC is suitable for 22~24 AWG wires.



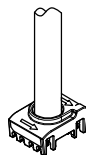
**Step 2:**  
Insert the wires into the cap through the holes.



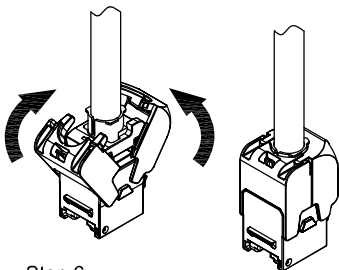
**Step 3:**  
Lay the wires to the correct positions based on the color code. (T568A/T568B)



**Step 4:**  
Cut the excess wires off.  
The tips of the wires should protrude no more than 0.5mm.

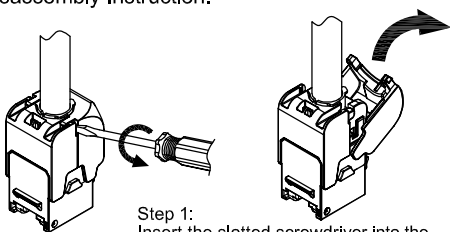


**Step 5:**  
Put the cap on the IDC tower. The arrows on the jack and the cap should face the same direction. Put the cap into position.



**Step 6:**  
Close the jaws until hearing the click.

**Disassembly Instruction:**



**Step 1:**  
Insert the slotted screwdriver into the slot and rotate to open the jaws.