

SCREWS SUPPLIED WITH THE LIGHTS

Ref.	Description	Quantity
A	Bracket	1
B	Threaded rod M6x100 DIN 975 A4 4	4
C	Hexagon nut M6 DIN 934 A4 12	12
D	Plain washer M6 sp1.6 EN ISO 7093/1 A4 12	12
E	Spring lock washer M6 UNI 1751 A4	8

Rev. 4 - 10 february 2023

**LOW INTENSITY OBSTRUCTION LIGHT**  
ICAO - Annex 14, Chapter 6 "Visual aids for denoting obstacles"  
**OPERATION AND INSTALLATION MANUAL**

**INSTRUCTIONS AND WARNINGS FOR A CORRECT AND SAFE USE**

**READ THE INSTRUCTIONS AND WARNINGS CONTAINED IN THIS MANUAL CAREFULLY AND KEEP THEM FOR FUTURE REFERENCE FOR THE ENTIRE SERVICE LIFE OF THE PRODUCT**  
**IN FACT, THEY PROVIDE IMPORTANT INDICATIONS, REGARDING THE OPERATION, USE AND MAINTENANCE OF THE PRODUCT AND SAFETY DURING INSTALLATION**

**SYMBOLS**

	The CE marking certifies the conformity of the device with Directives 2014/30/EU (EMC), 2014/35/EU (LVD), 2012/19/EU (WEEE) and 2011/65/EU (RoHS2)
	The warning light is a class II (or double insulation) Device, designed to not require a ground connection
	The crossed-out wheeled bin symbol indicates that it is forbidden to dispose of the device in bins intended for collection of urban solid waste
	Warning! This symbol draws attention to various aspects related to safety
	Warning! This symbol draws attention to electrical risk

**WARNINGS FOR INSTALLATION AND USE**

- The device must be installed and checked exclusively by technicians trained on the dangers deriving from electrical work. It is therefore necessary for the installers to be qualified to perform electrical work according to Standard IEC 60364-4-41 (EN 50110-1)
- Should the installation operations expose the installer to hazards due to work at a certain height (> 2m from the ground), the operator must have been trained on the relative risks and on the methods to be used to perform such operations safely
- This device is not built to be installed in environments with an explosive atmosphere as defined by standard IEC 60079-10-1 (EN 60079-10-1) "Explosive atmospheres Part 10-1: Classification of places - Explosive atmospheres for the presence of gas" and IEC 60079-10-2 (EN 60079-10-2) "Explosive atmospheres, Part 10-2: Classification of places - Explosive atmospheres for the presence of combustible powders"
- Do not install and use the device if one or more parts of it seem to be broken or damaged upon delivery
- Do not install the device in a corrosive environment higher than category C3 (EN ISO 9223)  
A corrosive environment can lead to poor performance and to the deterioration of the components
- Before wiring the device, make sure that the power cable is not powered
- For the electrical connection of the device, use a type of cable suitable for the environment where it will be used
- Do not look closely at the light emitted by this device. The warning light must only be turned on at night
- In case of malfunction contact the manufacturer
- The light source contained in this luminaire shall only be replaced by the manufacturer or his service agent or a similar qualified person

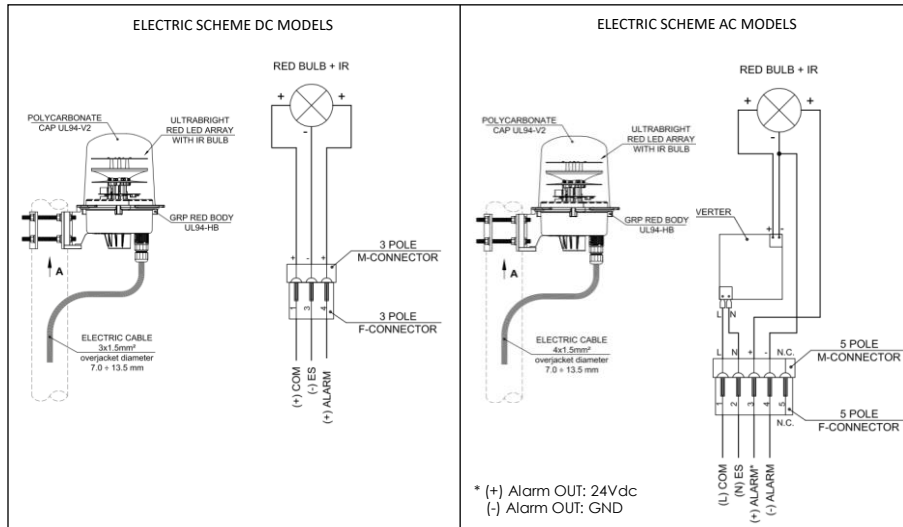
**GENERAL WARNINGS**

- This type of device must only be used for the purpose for which it has been designed. Any other use is to be considered improper and therefore hazardous. The manufacturer shall not be held responsible for any damage caused by improper or incorrect use
- Do not tamper with the components of the device and the accessories supplied. Use original spare parts only. Any changes made to the components or the use of non-original spare parts shall invalidate the warranty and may cause damage to the equipment or personal injuries
- If the device is sold to other people, the user instructions must be delivered with it
- In case of injuries or damage to the device, the manufacturer shall not be held responsible for anything caused by:
  - failure to comply with the instructions given in this manual;
  - repairs not performed by professionally qualified personnel;
  - changes to components and accessories of any type applied to the device and not expressly provided for in this manual, in particular if they might modify the original operation of the device in any way;
  - electrical power supply system not complying with current regulations

**INSTRUCTIONS FOR MAINTENANCE**

- At least once a year, visually check:
- the condition of the lamp and clean the transparent cap
  - the condition of the lamp fastening system (deformations and oxidation of the parts)
  - the absence of water inside the device
  - any damage to the power cable

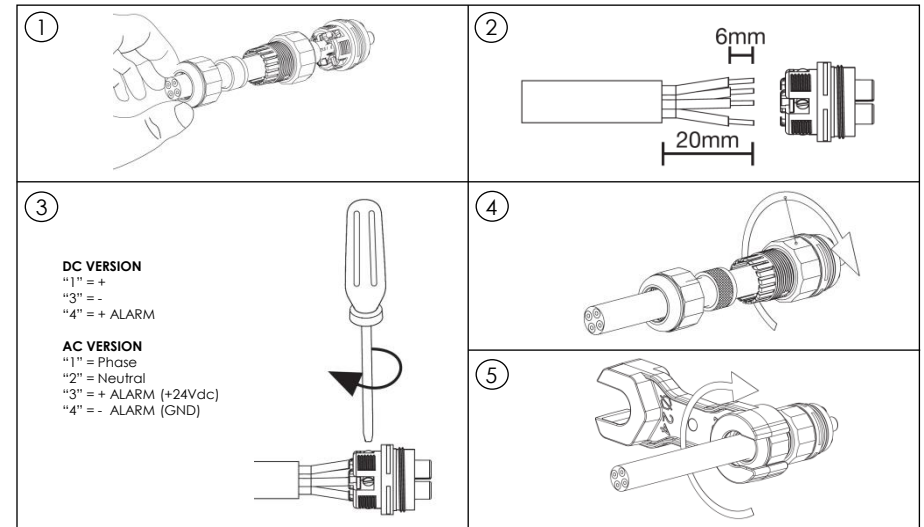
## LOW INTENSITY SINGLE OBSTRUCTION LIGHT LIOLB-P1\_2xSRX3



## TECHNICAL SPECIFICATION

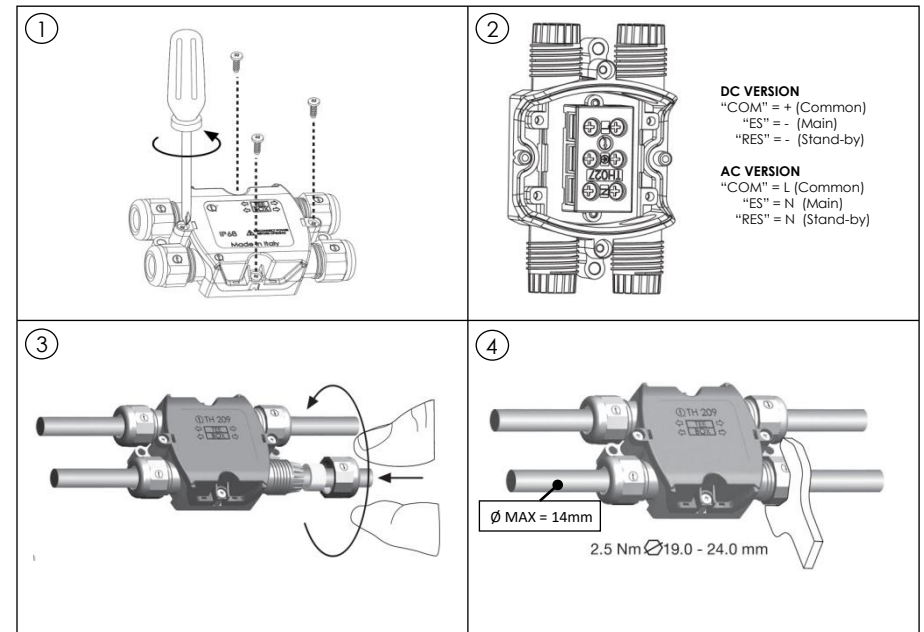
Type	NGV – COMPATIBLE SINGLE LOW INTENSITY OBSTRUCTION LIGHT	
Model	LIOLB-P1_22SRX3	LIOLB-P1_23SRX3
Voltage	10 ÷ 60 Vdc	110 ÷ 240 Vac 50/60Hz
Power Consumption	SRX3 = 5 W	SRX3 = 6 W (cosφ= 0.6)
Light intensity	ICAO Low Intensity type B 32 cd / FAA Low Intensity L-810 / TSFS2020:88 VISIBLE FAA AC 150/5345-43J / TSFS2020:88 INFRARED	
Infrared wavelength	850 nm	
Protection grade	IP 66	
Temperature range	-40°C ... +55°C	-30°C ... +55°C
Average life	100.000 hours	
Weight	0,7 kg	
Outer dimensions	A = 200 mm B = 165 mm C = 150 mm	
Bulb model	SRX3: SPL0LB-P1_22SRX3	SRX3: SPL0LB-P1_23SRX3

## SINGLE OBSTRUCTION LIGHT CABLING\*



\* The pictures in this section are for illustration purposes only

## DOUBLE OBSTRUCTION LIGHT CABLING\*



\* The pictures in this section are for illustration purposes only