

## Components

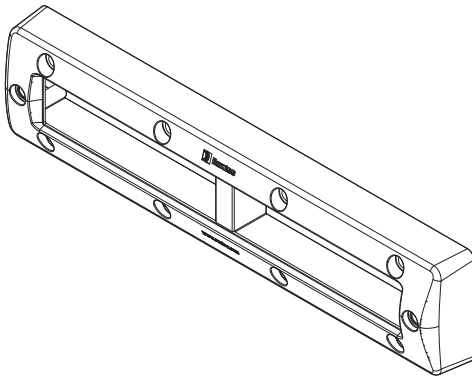


Fig. 1:  
Roxtec EzEntry™ 32 frame

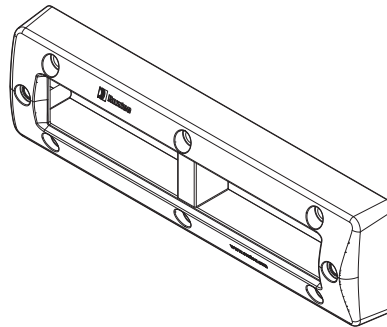


Fig. 2:  
Roxtec EzEntry™ 24 frame

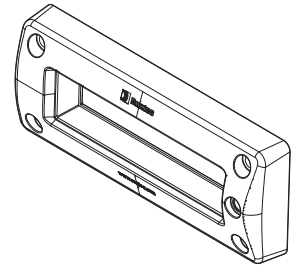


Fig. 3:  
Roxtec EzEntry™ 16 frame

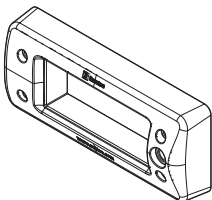


Fig. 4:  
Roxtec EzEntry™ 10 frame

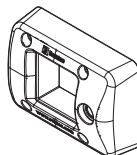


Fig. 5:  
Roxtec EzEntry™ 4 frame

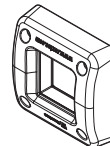


Fig. 6:  
Roxtec EzEntry™ 4 mini frame

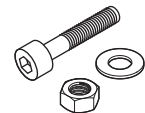


Fig. 7:  
Self tapping screws, nuts  
and washers

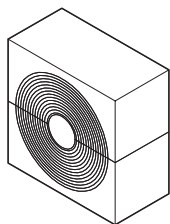


Fig. 8:  
Roxtec Module EM 40 10-32

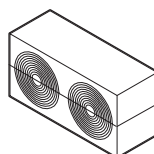


Fig. 9:  
Roxtec Module EM 20W40

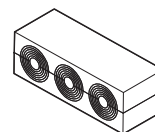


Fig. 10:  
Roxtec Module EM 13.3W40

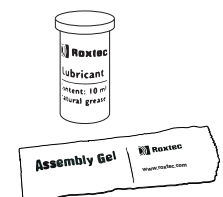


Fig. 11:  
Roxtec Lubricant or Assembly gel

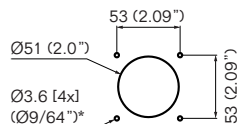
## Aperture dimensions

\* Recommended drill bit size when using the self tapping screws as thread tap.

When using nuts, see table below.

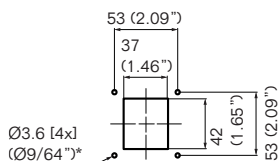
### EzEntry™ 4 mini and 4/4

(mm)



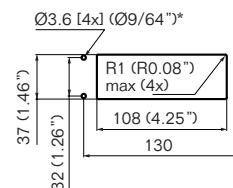
### EzEntry™ 4/9

(mm)



### EzEntry™ 10

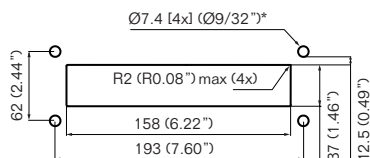
(mm)



Roxtec EzEntry™ 10 fits standard multipin connector knock-out.

### EzEntry™ 16

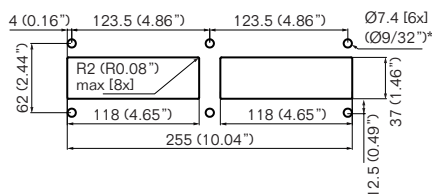
(mm)



Roxtec EzEntry™ 16 fits FL 21 knock-out.

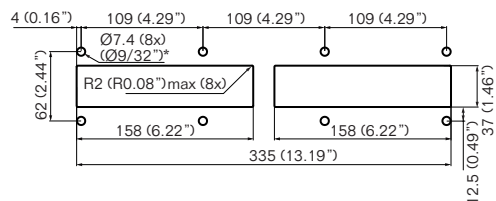
### EzEntry™ 24

(mm)



### EzEntry™ 32

(mm)

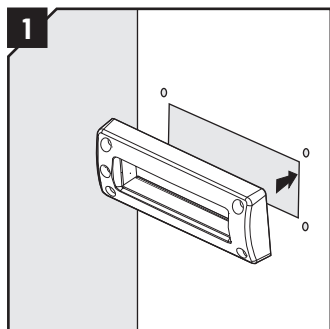


## Drill bit size when using nuts

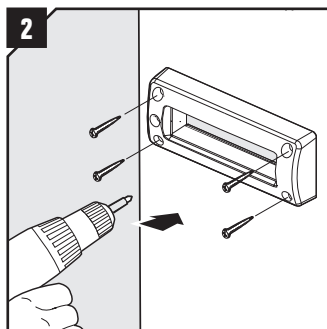
Frame type:	Drill bit diameter	
	(mm)	(in)
4 mini	4.5	3/16"
4	4.5	3/16"
10	4.5	3/16"
16	9	11/32"
24	9	11/32"
32	9	11/32"

## Installation

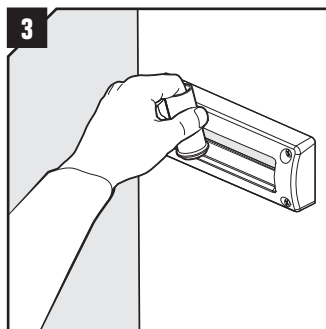
Cut an opening for the frame, according to the dimensions on previous page.  
For installation of Roxtec EzEntry™ 4 mini, see last page.



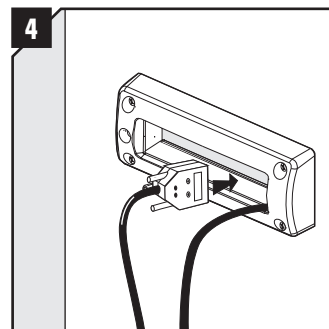
Insert the frame into the opening.



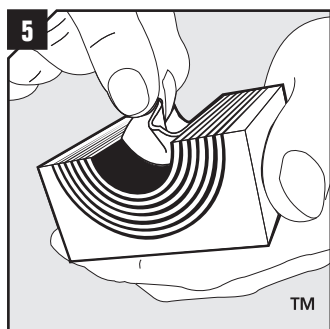
Attach the frame firmly.



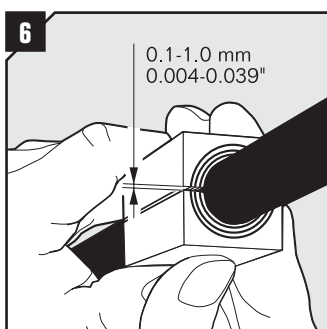
Lubricate the inside surfaces of the frame with Roxtec Lubricant. Make sure to lubricate the corners.



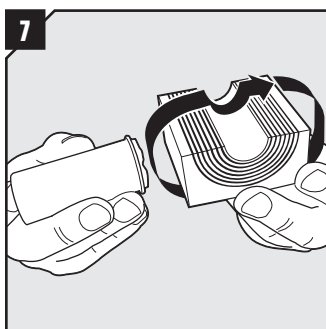
Feed the cables through the frame opening.



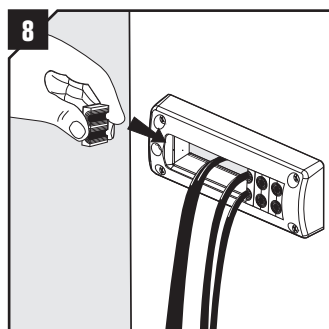
Adapt the module to the cable size. Peel off layers until you achieve the gap seen in picture 6. The halves may not differ by more than one layer.



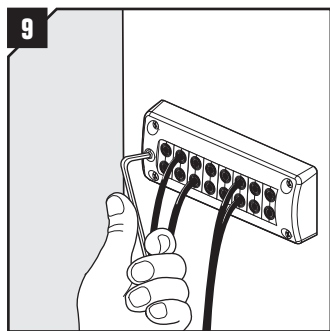
Achieve a 0.1-1.0 mm gap between the two halves when held against the cable.



Lubricate all modules thoroughly, both on the inside and the outside surfaces, before installation.



Insert the modules according to the installation plan (Packing plan).



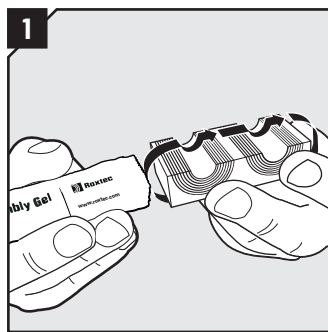
Tighten the integrated compression unit with a hex key to seal the transit. See recommended torque in the table.

## Torque settings

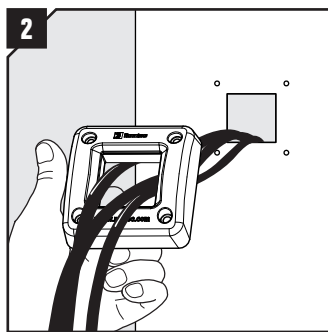
Frame type:	Rec. torque* (Nm)
4 mini	3-5
4	3-5
10	5-7
16	5-7
24	5-7
32	5-7

\* The recommended torque depends on several things, e.g cable or pipe size, amount of used lubricant, material in the cable sheath, etc.

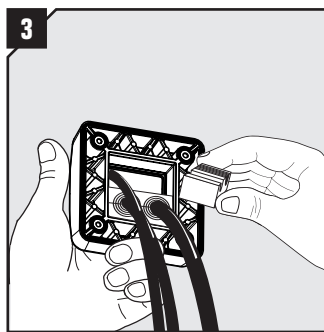
## Roxtec EzEntry™ 4 mini installation



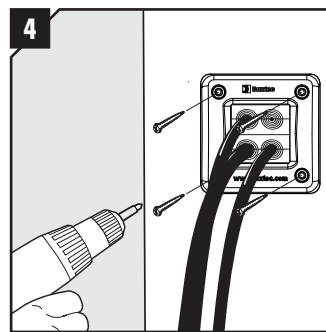
Lubricate the inside of the frame and the modules with Roxtec Assembly Gel.



Feed the cables through the frame.

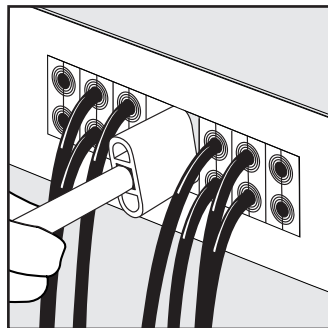


Adapt the modules to the cable size. Insert all modules from the back of the frame and install all cables before attaching the frame to the structure.



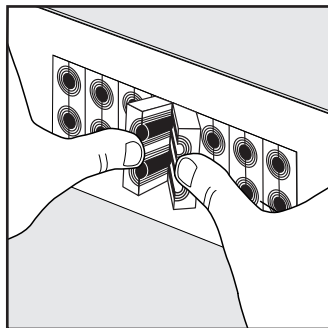
EzEntry 4 mini is compressed and sealed when you tighten the screws.

## Tips & recommendations



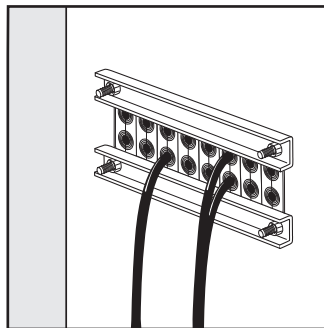
### Pre-compress

If more space is needed to install the last module, use a tool to pre-compress the modules in the frame. For information about the Roxtec compression tools, please visit installers section on [www.roxtec.com](http://www.roxtec.com).



### Angle the modules

To simplify the insertion of the last module, angle module halves and press them into the frame simultaneously.



### For EzEntry™ 16, please observe:

Use the counter flange (article no. 2CV0000000016) if the thickness of the wall structure is 2 mm (0.079") or less. The two parts are mounted on the backside of the wall, facing the "long" frame parts.

## Disassembly

Reverse order.

### DISCLAIMER

"The Roxtec cable entry sealing system ("the Roxtec system") is a modular-based system of sealing products consisting of different components. Each and every one of the components is necessary for the best performance of the Roxtec system. The Roxtec system has been certified to resist a number of different hazards. Any such certification, and the ability of the Roxtec system to resist such hazards, is dependent on all components that are installed as a part of the Roxtec system. Thus, the certification is not valid and does not apply unless all components installed as part of the Roxtec system are manufactured by or under license from Roxtec ("authorized manufacturer"). Roxtec gives no performance guarantee with respect to the Roxtec system, unless (i) all components installed as part of the Roxtec system are manufactured by an authorized manufacturer and (ii) the purchaser is in compliance with (a), and (b), below.  
(a) During storage, the Roxtec system or part thereof, shall be kept indoors in its original packaging at room temperature.  
(b) Installation shall be carried out in accordance with Roxtec installation instructions in effect from time to time.  
The product information provided by Roxtec does not release the purchaser of the

Roxtec system, or part thereof, from the obligation to independently determine the suitability of the products for the intended process, installation and/or use. Roxtec gives no guarantee for the Roxtec system or any part thereof and assumes no liability for any loss or damage whatsoever, whether direct, indirect, consequential, loss of profit or otherwise, occurred or caused by the Roxtec systems or installations containing components not manufactured by an authorized manufacturer and/or occurred or caused by the use of the Roxtec system in a manner or for an application other than for which the Roxtec system was designed or intended. Roxtec expressly excludes any implied warranties of merchantability and fitness for a particular purpose and all other express or implied representations and warranties provided by statute or common law. User determines suitability of the Roxtec system for intended use and assumes all risk and liability in connection therewith. In no event shall Roxtec be liable for indirect, consequential, punitive, special, exemplary or incidental damages or losses."



Roxtec International AB  
Box 540, 371 23 Karlskrona, SWEDEN  
PHONE +46 455 36 67 00, FAX +46 455 820 12  
EMAIL [info@roxtec.com](mailto:info@roxtec.com), [www.roxtec.com](http://www.roxtec.com)