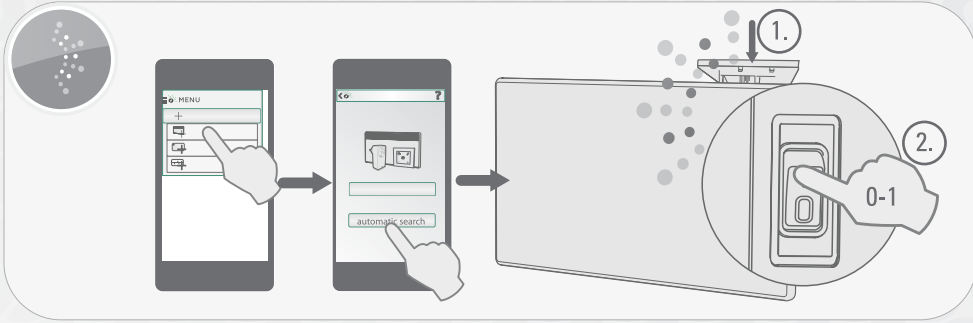
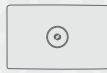
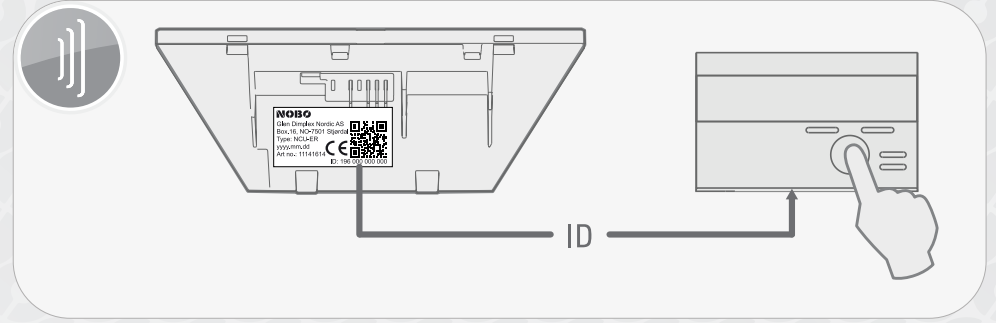


# NOBØ Energy Control



# NOBØ Orion 700



**Temperatur - Lämpötila - Temperature - Température - Temperatur - Sıcaklık - Температура - θερμοκρασία**

°C

**Temperatur - Lämpötila - Temperature - Température - Temperatur - Sıcaklık - Температура - θερμοκρασία**

°C

**Lightbulb icon**

Blå Sininen Blue - Bleu Blau - Blauw Mavi Синий Μπλε	Grønn - Grøn Vihreä - Grön Green - Vert Grün - Groen Yeşil Зеленый Πράσινος	Rød - Röd Punainen Red - Rouge Rot - Rood Kırmızı Красный Κόκκινος	Gul Keltainen Yellow - Jaune Gelb - Geel Sarı Желтый Κίτρινος

**Lightbulb icon**

Blå Sininen Blue - Bleu Blau - Blauw Mavi Синий Μπλε	Grønn - Grøn Vihreä - Grön Green - Vert Grün - Groen Yeşil Зеленый Πράσινος	Rød - Röd Punainen Red - Rouge Rot - Rood Kırmızı Красный Κόκκινος	Gul Keltainen Yellow - Jaune Gelb - Geel Sarı Желтый Κίτρινος
	06 09 12 	06 09 12 	

# NOBO NCU-ER

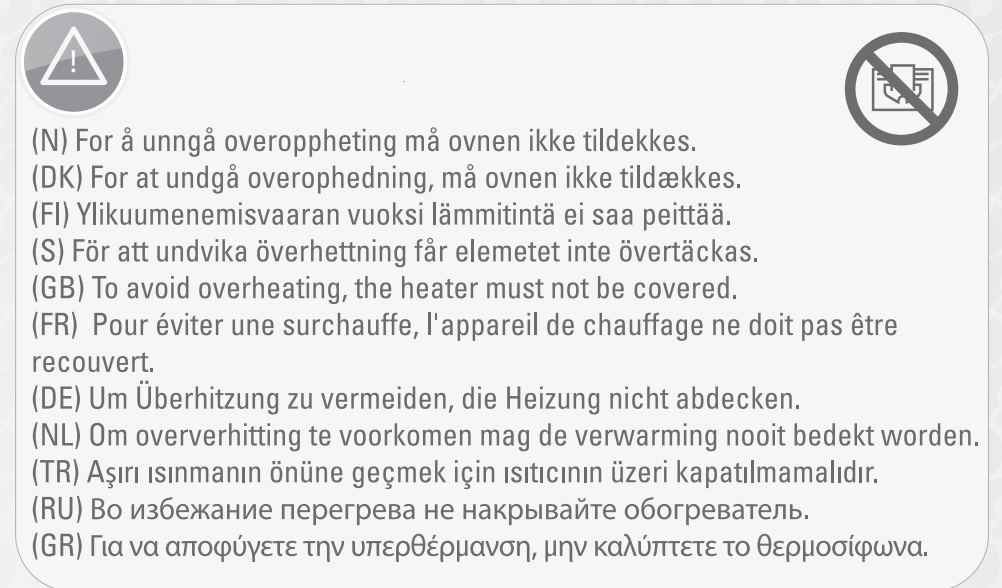
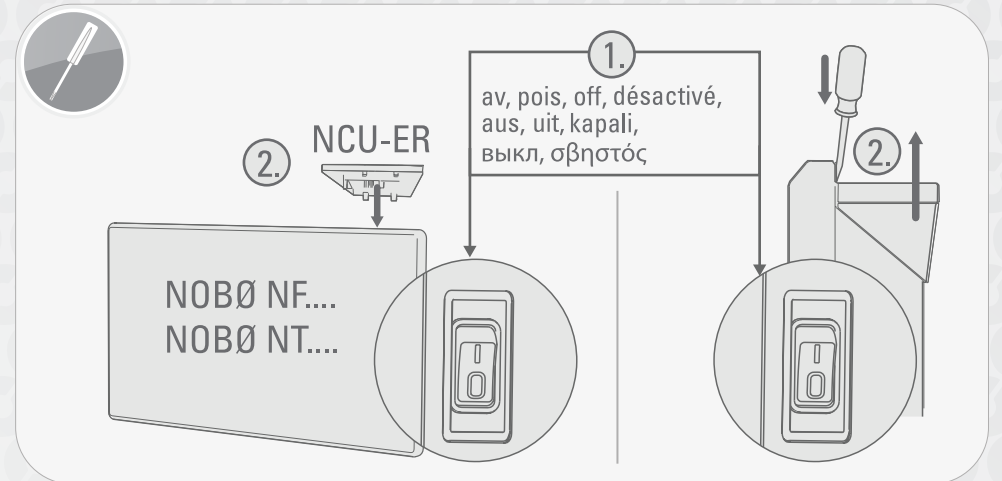
NOBØ Control Unit



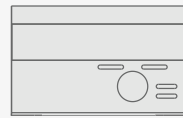
80390115C

Radiomottaker - Radiomottager - Radiovastaanotin  
Radiomottagare - Radio receiver - Récepteur radio  
Funkempfänger - Radio-ontvanger  
Ραδιο Αλίσισι - Радиоприемник - Ραδιοδέκτης

**NOBO**  
energy control



? → <http://help.nobo.no>



#### Samsvarserklæring (DoC)

Glen Dimplex Nordic AS erklærer herved at utstyret som er beskrevet i denne anvisningen oppfyller alle vesentlige krav og andre relevante bestemmelser i EU-direktiv 2014/53/EU. Ved behov for kopi av DoC kan forespørsel sendes til [email@glendimplex.no](mailto:email@glendimplex.no).

#### Declaration of Conformity (DoC)

Glen Dimplex Nordic AS declares that the equipment described in this user guide, is in compliance with the essential requirements and other relevant provisions of EU Directive 2014/53/EU. If you require a copy of the original signed DoC, please send an e-mail to: [email@glendimplex.no](mailto:email@glendimplex.no)

#### Déclaration de conformité (DdC)

Par la présente, Glen Dimplex Nordic AS déclare que l'équipement décrit dans ce Guide de l'utilisateur est en conformité avec les exigences essentielles et autres dispositions pertinentes de la directive 2014/53/EU. Si vous avez besoin d'une copie de la DdC originale, veuillez envoyer un courriel à : [email@glendimplex.no](mailto:email@glendimplex.no)

Radio 868,4 MHz at max 10mW

(N) Produktet skal leveres til gjenvinning ved endt levetid.

(DK) Efter endt levetid må produktet indleveres til genbrug.

(FI) Lämmitinlaitetta on toimitettava kierrätykseen.

(S) När produkten ska kasseras lämnas den till återvinning.

(GB) At the end of its service life, the product must be recycled.

(FR) À la fin de sa durée de vie, le produit doit être recyclé.

(DE) Am ende der Lebensdauer, geben Sie das Produkt zum Recycling zurück.

(NL) Op het einde van de nuttige levensduur, moet het product worden gerecycled.

(TR) Kullanım ömrü sonunda cihaz geri dönüşüm servislerine teslim edilmelidir.

(RU) По истечении срока службы изделие должно быть отправлено на утилизацию.

(GR) Στο τέλος της ζωής του, το προϊόν θα πρέπει να ανακυκλώνεται.



**GlenDimplex**  
NORDIC



Havnegata 24, box 16, NO-7501 Stjørdal, NORWAY  
[www.glendimplex.no](http://www.glendimplex.no)  
[email@glendimplex.no](mailto:email@glendimplex.no)