

# Driver-kit 45W BTDA/BTSL

exakt<sup>o</sup>



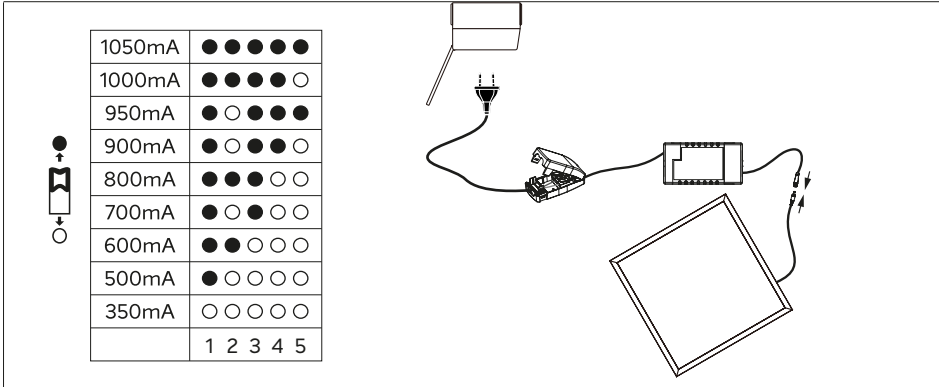
Bryt spänningen innan installation och vid ändringar på sensorinställningar.  
Disconnect the mains before installation and changes of the sensor settings.  
Kytke virta pois päältä ennen asennusta tai tunnistimen asetusten muuttamista.



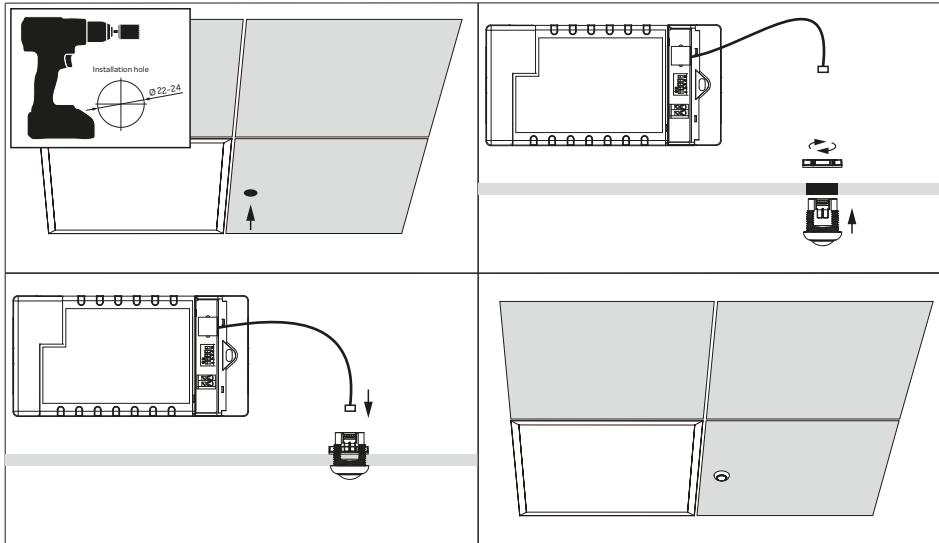
Se till att rätt värde för ström (mA) är inställt innan start av drivdon.  
Please make sure the correct current is selected before starting the driver.  
Valitse virta (mA) ennen kuin kytket liitäntälaitteen.

## INSTALLATION/INSTALLATION/AENNUS

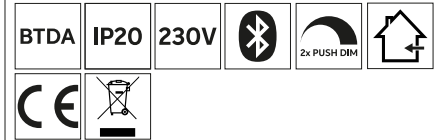
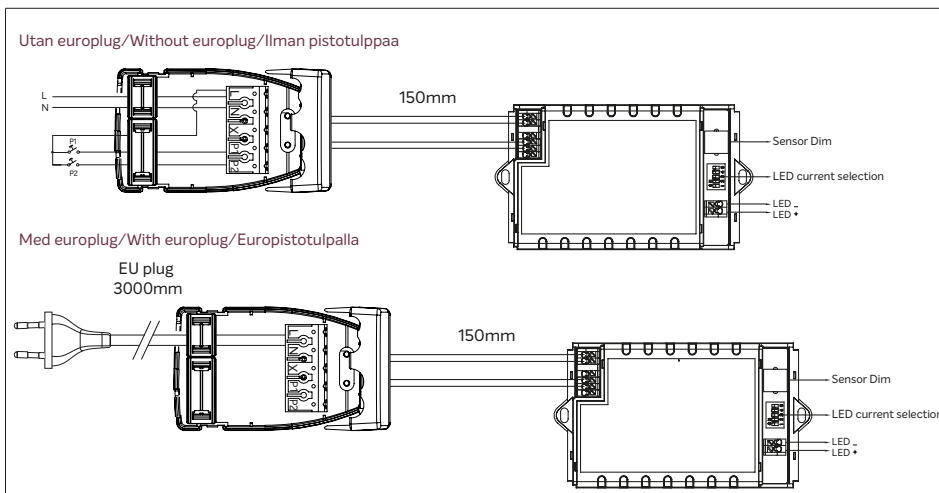
### Drivdon/Driver/Liitäntälaitte



### Sensor/Sensor/Tunnistin



### Kopplingschema/Wiring Diagram/Kytkentäkaavio



### BTDA app



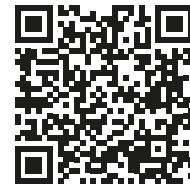
iOS

Exaktor Koolmesh

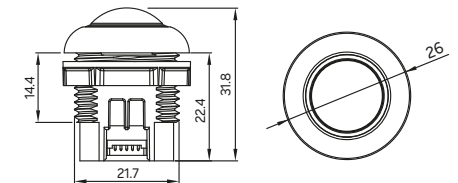
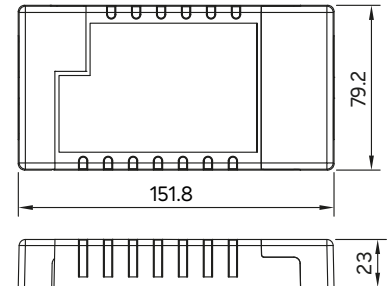


android

Koolmesh



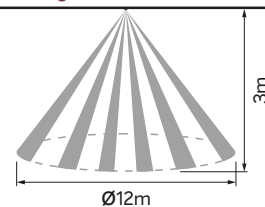
### Måttskiss/Mesaurement/Mitat



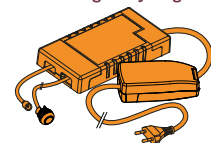
### Specifikation/Specifications/Tekniset tiedot

P <sub>N</sub> (W)	51	Po(W)	I <sub>o</sub> (mA)	U <sub>o</sub> (VDC)
U <sub>N</sub> (VAC)	220...240	3.5-19	350	10-54
I <sub>N</sub> (mA)	240...220	5-27	500	10-54
f <sub>N</sub> (Hz)	50/60	6-32	600	10-54
λ	0,95	7-38	700	10-54
t <sub>c</sub> (°C)	80	8-42	800	10-52
t <sub>a</sub> (°C)	50	9-45	900	10-50
		9.5-45	950	10-47
		10-45	1000	10-45
U <sub>o</sub> (Max)	75VDC	10.5-44	1050	10-42

### Detekteringsområde/Detection area/Tunnistusalue



### Återvinning/Recycling/Kierrätys



För mer information och manualer, skanna QR-koden!  
For more information and manuals, scan the QR code!  
Lisätietoja ja käyttöohjeita skannaamalla QR-koodi!